

100W 3-Phase AC Gear Motor

ATO-GEAR-HV100

Cheap AC gear motor for sale. Rated power 100W, optional power supply 110V/220V/380V (3-phase or single phase), gear ratio 3:1 to 100:1 for selection, output torque 0.16-5.8 kg.m, output shaft diameter 18mm/22mm, installation direction horizontal or vertical. Adding brake for power cutting is available.

Basic Specification

Model	ATO-CH18-100-25-S
Rated Power	100W
Rated Voltage	Single-phase 110V, 50/60Hz Single-phase 220V, 50/60Hz 3-phase 220V, 50/60Hz 3-phase 380-415V, 50/60Hz
Gear Ratio	3:1/ 5:1/ 10:1/ 15:1/ 20:1/ 25:1/ 30:1/ 40:1/ 45:1/ 50:1/ 60:1/ 70:1/ 80:1/ 90:1/ 100:1
Duty	Continuous running
Working Environment	Temperature 10°C~+40°C
	Humidity ≤90%
Pole	4P (6P)
Working Height	≤1000m
Standard	GB755/IEC-60034

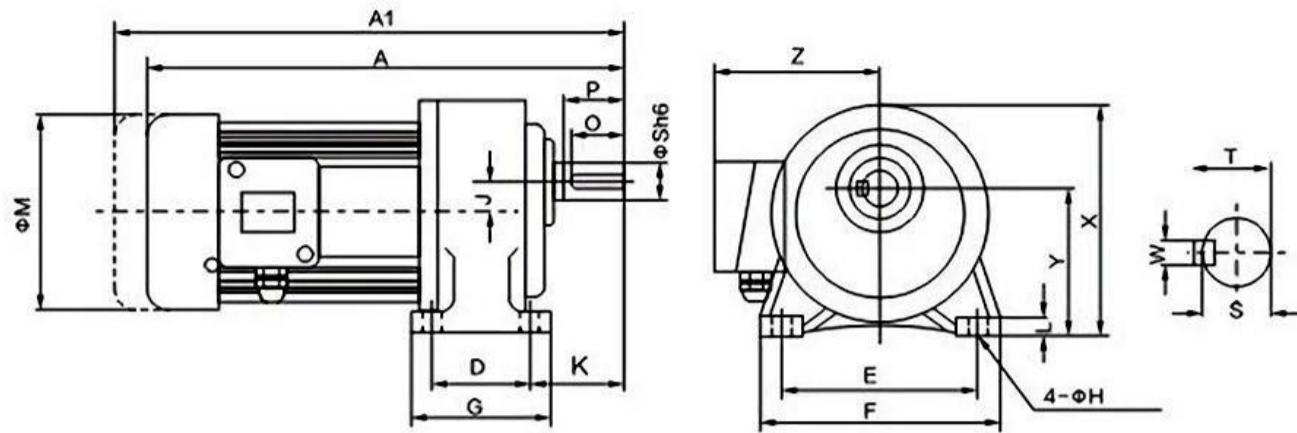
100W AC Gear Motor Load Current Value

Phase	3-Phase							
Frequency	50Hz				60Hz			
Voltage	220V	380V	415V	440V	220V	380V	440V	460V
Current	0.60A	0.40A	0.32A	0.30A	0.06A	0.40A	0.30A	0.29A
Phase	Single-Phase							
Frequency	50Hz				60Hz			
Voltage	110V	115V	220V	230V	110V	115V	220V	230V
Current	1.60A	1.50A	0.80A	0.75A	1.34A	1.25A	0.66A	0.63A

100W AC Gear Motor Output Torque

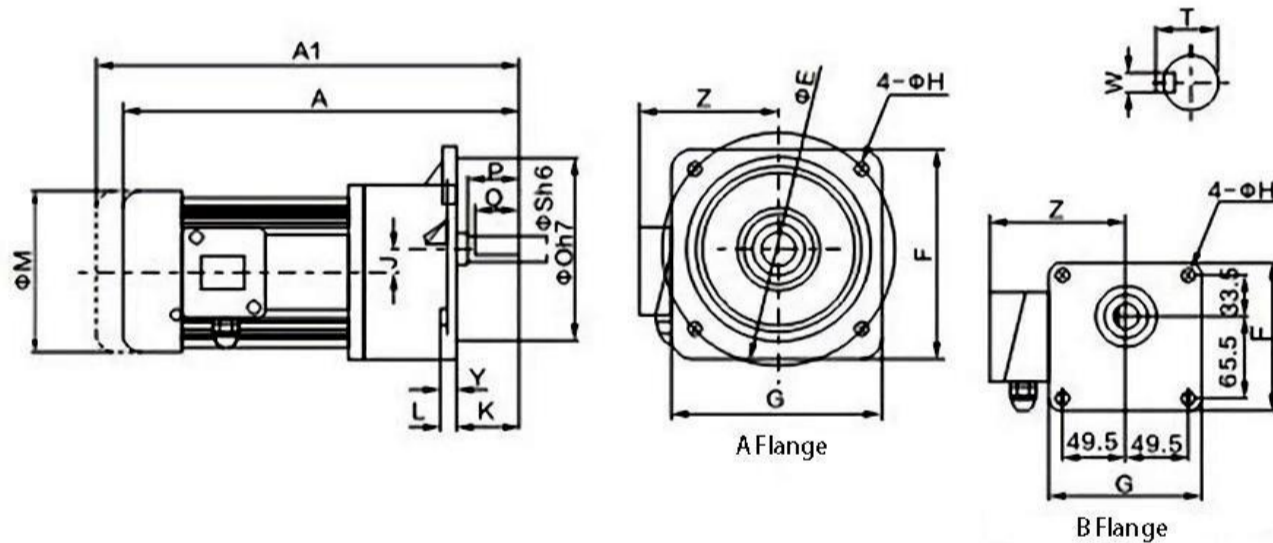
Gear Ratio		3	5	10	15	20	25	30	40	45	50	60	70	80	90	100
Output Speed(rpm)	50Hz	465	300	150	100	75	60	50	37	33	30	25	21	19	17	15
	60Hz	570	360	180	120	90	72	60	45	40	36	30	25	23	20	18
Output Torque(kg.m)	50Hz	0.19	0.31	0.62	0.91	1.2	1.4	1.8	2.2	2.7	2.8	3.4	4.3	4.8	5.2	5.8
	60Hz	0.16	0.26	0.52	0.76	1	1.2	1.5	1.9	2.2	2.4	2.9	3.6	4	4.4	4.9

100W Horizontal AC Gear Motor Dimensions (Unit: mm)



Gear Ratio	Shaft Diameter	A	D	E	F	G	H	J	K	L	M	X	Y	Z	S	P	Q	W	T	Weight (kg)
3~50	18	255	40	110	135	65	9	16	50	14	129	132	88.5	110	18	30	25	5	20	5.6
60~200	22	285	65	130	158	90	11	18.17	60	13	129	152	97.5	110	22	40	35	7	25	6.3

100W Vertical AC Gear Motor Dimensions (Unit: mm)



Gear Ratio	Shaft Diameter	A	D	E	F	G	H	J	K	L	M	Y	Z	S	P	Q	W	T	Weight (kg)
3~50	18 (B)	255	50	140	120	120	9	16	39	10	129	6	110	18	30	25	5	20	5.8
60~200	22 (B)	285	148	185	176	165	11	18.17	45	12	129	3.5	110	22	40	35	7	25	7.3