

Data Downloading Operation Instructions

1. Storage settings

1) Press “Power On” to turn on the instrument (Figure 1), press “MEUN” to enter the menu interface (Figure 2), press “<” or “>” to enter the “Storage Parameter Settings” page (Figure 3) .



Figure 1



Figure 2



Figure 3

2) Select “Storage Set” and press “power-on” button to enter the next screen (Figure 4), press the “MEUN” button to select “NO” (Figure 5), press the “<” or “>” button Select "Yes" and press the “Enter” key to save the settings (Figure 6).



Figure 4



Figure 5

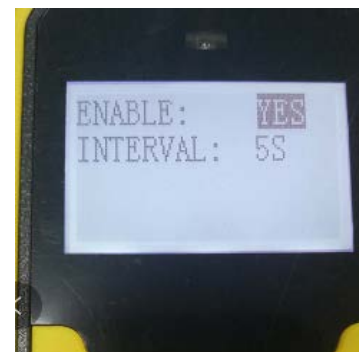


Figure 6

3) Press “ESC” to return to the main page and view “STORAGE ON”, indicating that the storage is already on (Figure 7), and the number of recorded messages is displayed in the upper right corner of the screen (Figure 8). If it is "STORAGE OFF", the storage is not turned on.



Figure 7



Figure 8

2. Instrument and computer connection

Keep the instrument turned on, and connect the instrument and computer with the data cable. (Connect the MINI USB cable to the USB port of the instrument, and connect the USB cable to the USB port of computer (Figure 9).)



Figure 9

3. Driver installation

1) Insert the CD into the CD drive and find the installation file (For example with "Portable storage software -- English"). Click on the page shown in Figure 10, click on the "Hardware Driver" option (Figure 11), and click on "CH340 Driver (USB Driver)_XP_WIN7" option (Figure 12).

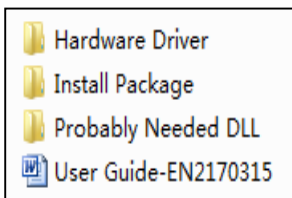


Figure 10

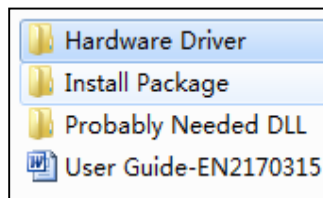


Figure 11

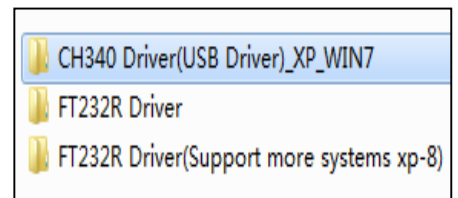


Figure 12

2) Go to the page of Figure 13, click "SETUP" to enter the installation interface (Figure 14), click "Install", enter the interface of Figure 15, to display "Drive installation completed", click "OK", the driver installation is complete.

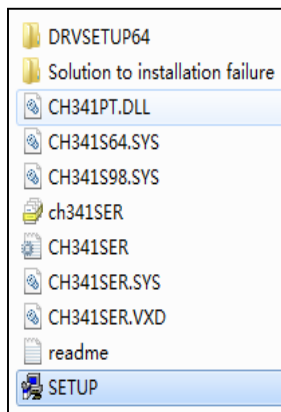


Figure 13

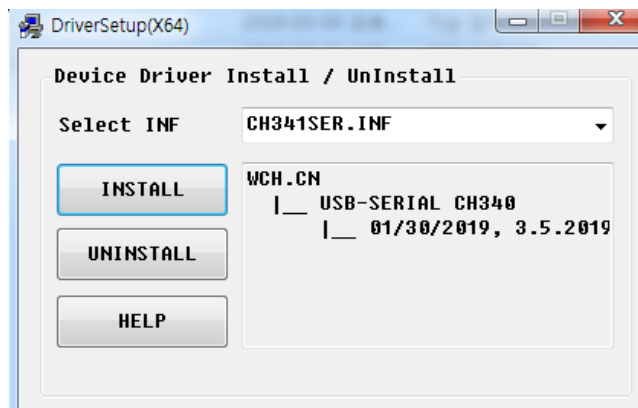


Figure 14

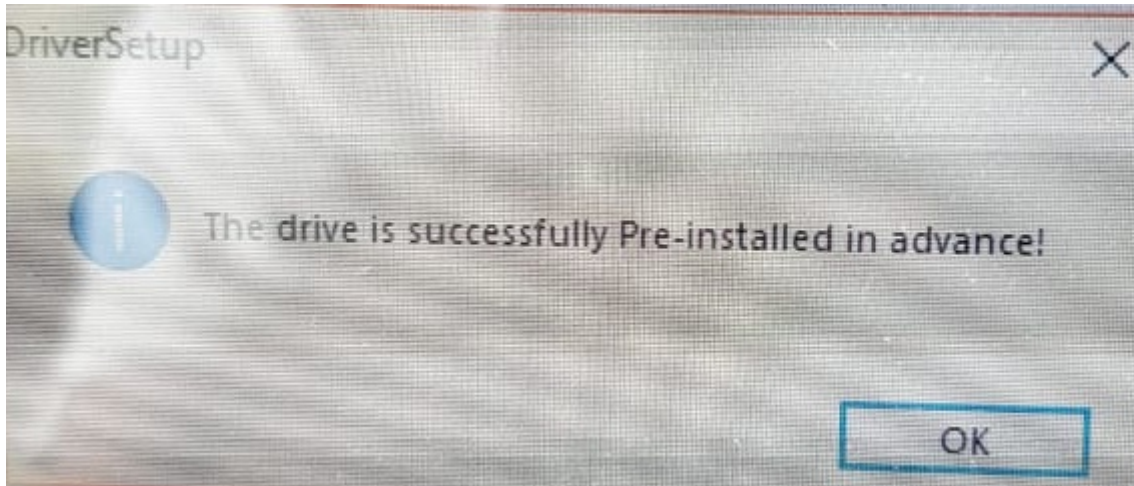


Figure 15

3) Drive installation check

Right-click "My Computer" to enter the "Device Manager" interface (Figure 16), check the port has a "USB-SERIAL CH340" display indicating that the driver is successfully installed and connected. If the instrument and computer connection are abnormal, it is necessary to check whether the instrument is powered on, the USB interface and the data cable are abnormal.

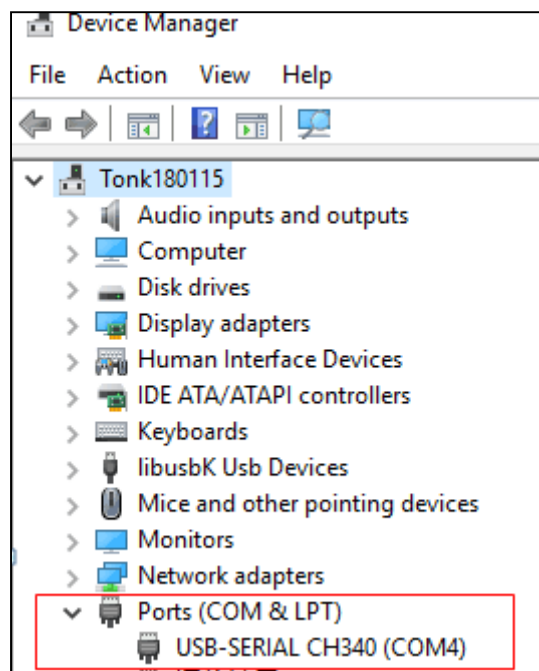


Figure 16

4. Software installation

1) Return to the installation file interface (Figure 10), select and click "Install package" (Figure 17), click "setup" to install the program (Figure 18), enter the program installation interface, until the installation is complete (Figure 19). After successful installation, close the installation interface, the program icon will appear on the desktop (Figure 20), and the software installation is complete.

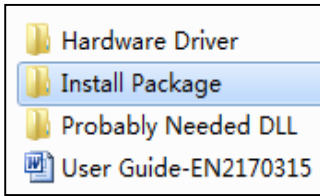


Figure 10

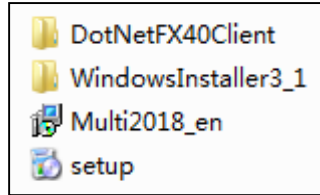


Figure 17

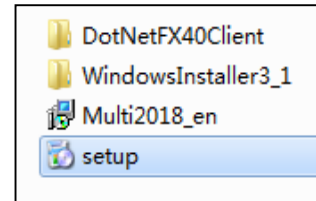


Figure 18

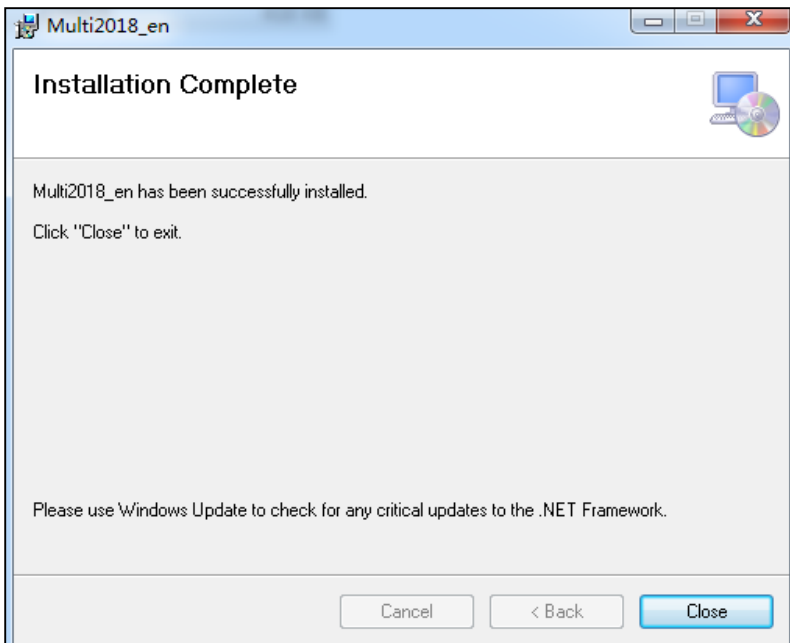


Figure 19



Figure 20

5. Data operation

1) Click the program icon to enter the program interface (Figure 21), click on "Find Port", and select "COM4" (drive installed serial port)

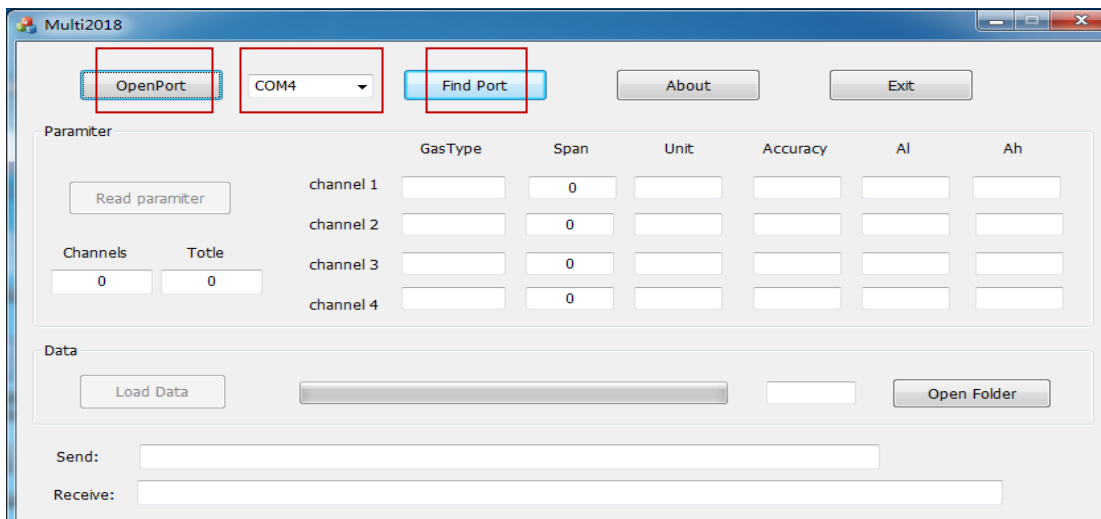


Figure 21

2) Click the "OpenPort" button, then click the "Read parameter" button to check if there have parameters in the red mark of Figure 22. If there have parameters, it is normal.

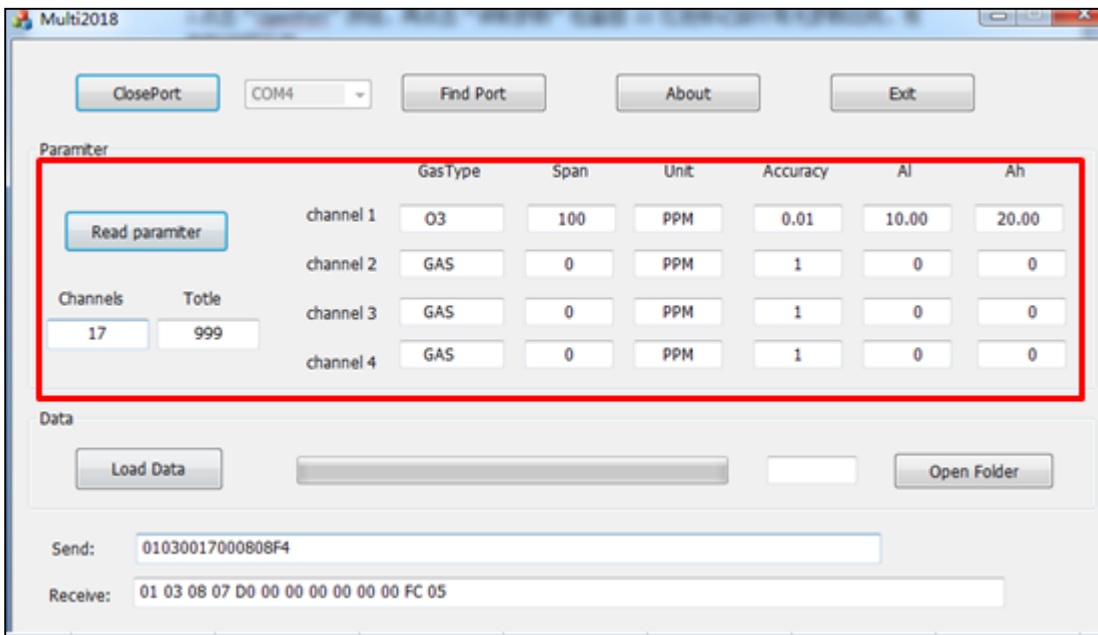


Figure 22

3) Click the "Load Data" button, when the progress bar reaches 100%, the data guide is completed (Figure 23).

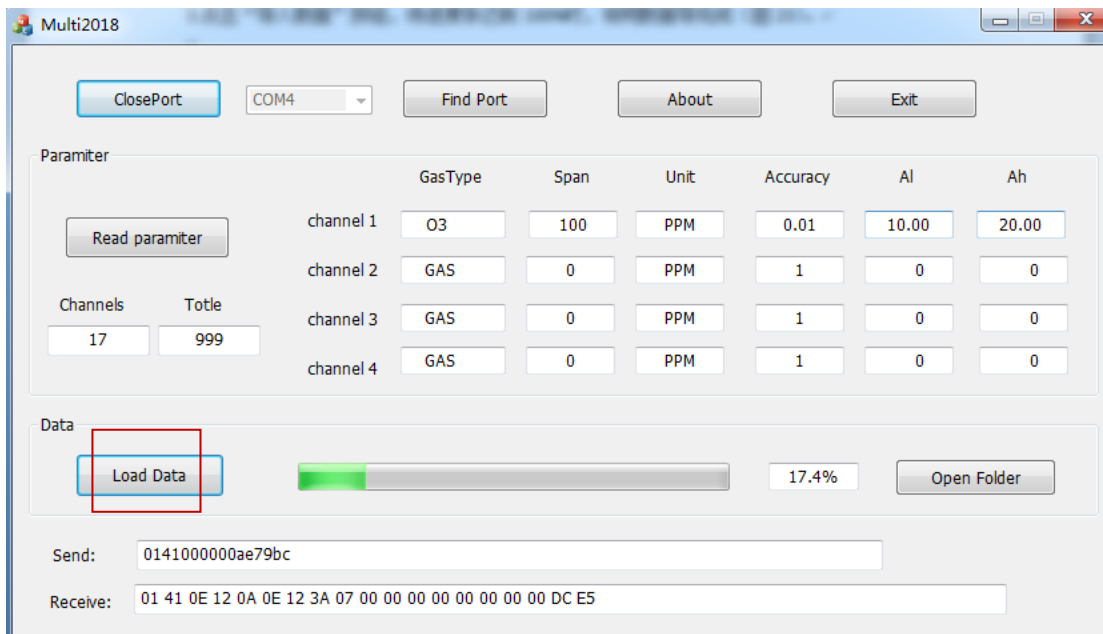


Figure 23

- 4) After the data import is completed, click the “Open Folder” button (Figure 23), the “MULTI_RECORD_DATA” folder will be automatically played (Figure 24). And the EXCEL file will appear and which is the imported storage data file. Click to view the data (Figure 25);

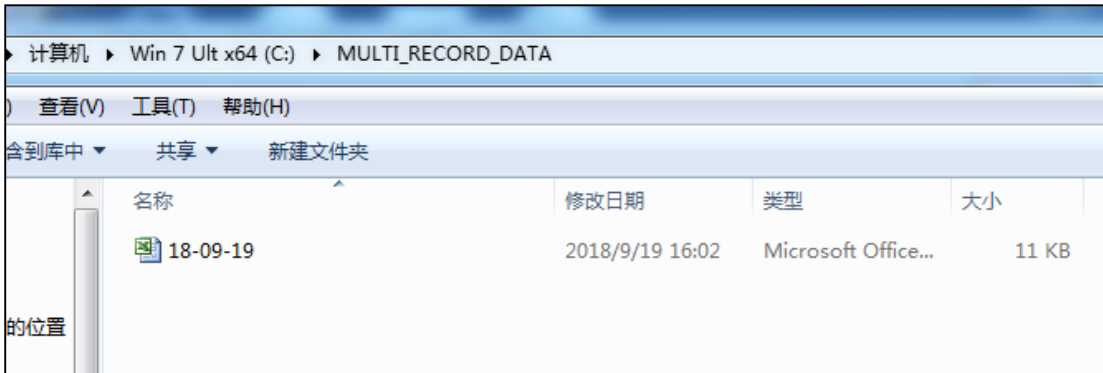


Figure 24

Time	CH1 Gas_type	CH1 Value	CH1 Unit	CH2 Gas_type	CH2 Value	CH2 Unit	CH3 Gas_type	CH3 Value	CH3 Unit	CH4 Gas_type	CH4 Value	CH4 Unit
2018-10-09 17:48:41	03	0.00	PPM	GAS	0	PPM	GAS	0	PPM	GAS	0	PPM
2018-10-09 17:48:46	03	0.00	PPM	GAS	0	PPM	GAS	0	PPM	GAS	0	PPM
2018-10-09 17:48:51	03	0.00	PPM	GAS	0	PPM	GAS	0	PPM	GAS	0	PPM
2018-10-09 17:48:56	03	0.00	PPM	GAS	0	PPM	GAS	0	PPM	GAS	0	PPM
2018-10-09 17:49:01	03	0.00	PPM	GAS	0	PPM	GAS	0	PPM	GAS	0	PPM

Figure 25

6. The necessary conditions for exporting data

- 1) The instrument must have storage and export functions
- 2) The computer's operating system: Windows XP / Window7 / Window8 / Window10 system, and the office software or Jinshan Company's WPS office software installed, the application software will use the EXCEL component.
- 3) Install the hardware driver and application: Insert the installation CD into the CD drive, and the content installation file on the CD can be copied to the hard disk for backup.
- 4) Connection status: The instrument should be in the normal turn-on state, and the instrument and the computer are connected through the standard USB data cable.

7. Attention

- 1) When importing data, the EXCEL file will be created automatically and named after the date of import. Only one file will be generated in one day. If there are multiple instruments in the day that need to be imported, when importing the next data, please removed or renamed the last instrument data file.
- 2) When there is too much source data for each instrument, please save the exported data to the computer and erase the data in the instrument to avoid the data save slowly.
- 3) When exporting data, individual date or data is “garbled”. This is because the battery voltage is too low (requires timely

charging). Please import and save the data in the computer and then erase the data in the instrument. After charging, the data will be recorded normally.

4) The storage settings need to be turned off when exporting data.