

ATO

Pure Sine Wave Power Inverter Catalogue



Welcome to ATO.com!

>>>Website: www.ato.com

>>>E-mail: sales@ato.com

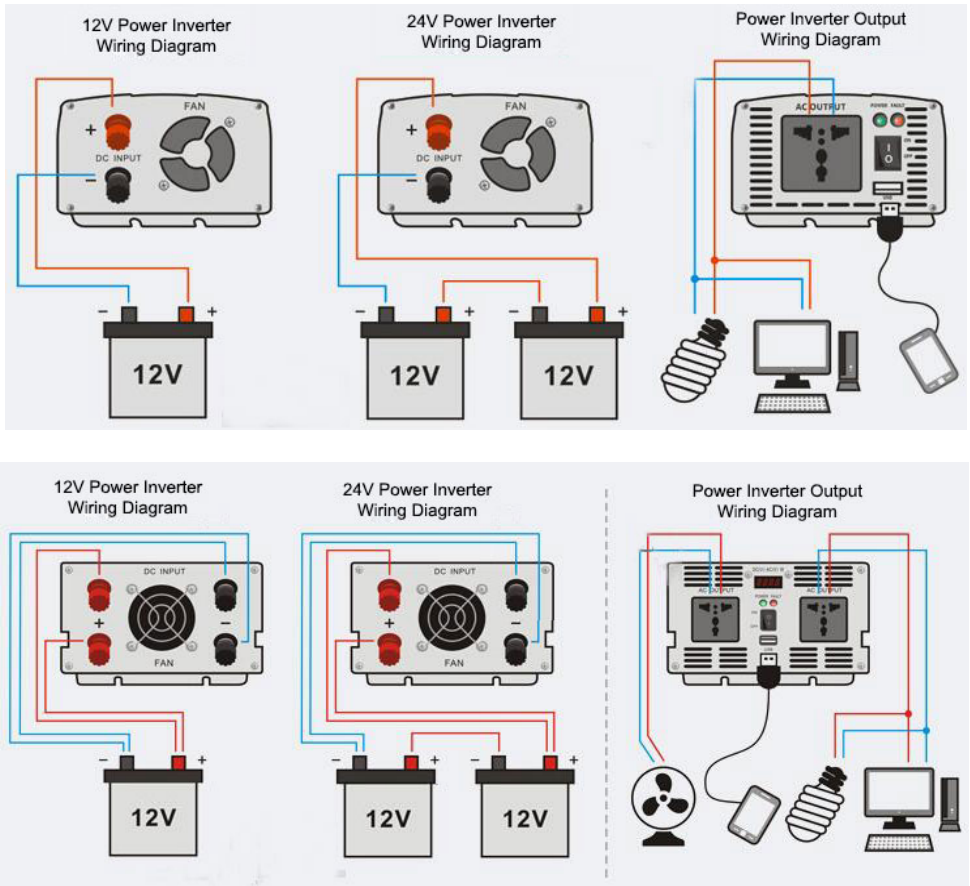
>>>Tel: +1 800-585-1519

• Introduction

ATO-JYP series pure sine wave inverters have continuous output power ratings from 300 Watts to 6000 Watts. It can convert 12V/24V/48V DC battery power to 110V/120V/220V/230V/240V AC household power. The pure sine wave inverters provide clean, stable and high quality AC power, ideal for powering all kinds of electronics or devices including resistive loads and sensitive loads. It also comes with full safety protections: over load protection, over temperature protection, over voltage protection, low voltage protection, short circuit protection, and revers polarity protection, to ensure the safety of your electronics or appliances.



• Wiring Diagram



Note: 48V and 24V inverters are connected in similar way and the batteries are connected in series.

• Applications

ATO-JYP 300W-6000W Pure Sine Wave Inverters deliver the true sine wave power that is the same as the grid power we use every day, ideal for running all kinds of electronics, household appliances, power tools and sensitive loads.

Electrical loads	Modified Sine Wave	Pure Sine Wave	Electrical loads	Modified Sine Wave	Pure Sine Wave
 Energy-saving lamp	✓	✓	 Microwave oven	✓	✓
 Incandescent	✓	✓	 Iron	✓	✓
 Hair dryer	✓	✓	 Refrigerator	✗	✓
 Computer	✓	✓	 Washing machine	✗	✓
 TV	✓	✓	 Wall air conditioning	✗	✓
 Soybean milk machine	✓	✓	 Vertical air conditioning	✗	✓
 Shaver	✓	✓	 Projector	✗	✓
 Digital products	✓	✓	 LED lamp	✗	✓
 Printer	✓	✓	 Audio	✗	✓
 Household fan	✓	✓	 Electric hand drill	✗	✓
 Smart fan	✓	✓	 Hand mill	✗	✓
 Rice cooker	✓	✓	 Water pump	✗	✓
 Packer	✓	✓	 Induction cooker	✗	✓

300W Pure Sine Wave Power Inverter



Model	ATO-JYP-300					
Rated power	300W					
Peak power	600W					
Input voltage	DC12V	DC24V	DC48V	DC12V	DC24V	DC48V
Output voltage	100VAC or 110VAC or 120VAC±5%			220VAC or 230VAC or 240VAC±5%		
Unload current less than	0.3A	0.2A	0.2A	0.3A	0.2A	0.2A
Output frequency	50Hz±0.5Hz or 60Hz±0.5Hz					
Output waveform	Pure Sine Wave					
Waveform distortion	THD<3% (Linear load)					
USB port	5V 1A					
Max.efficiency	90%					
Input voltage range	10-15.5V	20-31V	40-61V	10-15.5V	20-31V	40-61V
Low voltage alarm	10.5±0.5V	21±0.5V	42±1V	10.5±0.5V	21±0.5V	42±1V
Low voltage protection	10±0.5V	20±0.5V	40±1.5V	10±0.5V	20±0.5V	40±1.5V
Over voltage protection	15.5±0.5V	31±0.5V	61±1V	15.5±0.5V	31±0.5V	61±1V
Low voltage recover	13±0.5V	24±0.5V	48±1V	13±0.5V	24±0.5V	48±1V
Over voltage recover	14.8V±0.5V	29.5V±0.5V	59V±1V	14.8V±0.5V	29.5V±0.5V	59V±1V
Protection function	Low voltage		Alarm at first, voltage continously reduce, LED red light on & shut down.			
	Over voltage		LED red light on, shut down.			
	Over load		LED red light on, shut down.			
	Over temperature		Alarm at first, temperature continously rise, LED red light on & shut down.			
	Short circuit		LED red light on.			
	Input reverse polarity		Fuse burn-out.			
Working temperature	-10℃~ +50℃					
Storage temperature	-30℃~ +70℃					
Dimension	186x106x63mm					
Packing	235x143.5x82mm					
Net./gross weight	695g/920g					
QTY/Ctn	30 Pcs					
Meas./Ctn	635x330x355mm					
Gross weight/Ctn	27600g					
Warranty	1 year					
Configuration	Standard					
Cooling method	Intelligent air cooling					

* Product specifications are subject to change without further notice

500W Pure Sine Wave Power Inverter



Model	ATO-JYP-500					
Rated power	500W					
Peak power	1000W					
Input voltage	DC12V	DC24V	DC48V	DC12V	DC24V	DC48V
Output voltage	100VAC or 110VAC or 120VAC \pm 5%			220VAC or 230VAC or 240VAC \pm 5%		
Unload current less than	0.6A	0.4A	0.3A	0.6A	0.4A	0.3A
Output frequency	50Hz \pm 0.5Hz or 60Hz \pm 0.5Hz					
Output waveform	Pure Sine Wave					
Waveform distortion	THD \leq 3% (Linear load)					
USB port	5V 1A					
Max.efficiency	90%					
Input voltage range	10-15.5V	20-31V	40-61V	10-15.5V	20-31V	40-61V
Low voltage alarm	10.5 \pm 0.5V	21 \pm 0.5V	42 \pm 1V	10.5 \pm 0.5V	21 \pm 0.5V	42 \pm 1V
Low voltage protection	10 \pm 0.5V	20 \pm 0.5V	40 \pm 1.5V	10 \pm 0.5V	20 \pm 0.5V	40 \pm 1.5V
Over voltage protection	15.5 \pm 0.5V	31 \pm 0.5V	61 \pm 1V	15.5 \pm 0.5V	31 \pm 0.5V	61 \pm 1V
Low voltage recover	13 \pm 0.5V	24 \pm 0.5V	48 \pm 1V	13 \pm 0.5V	24 \pm 0.5V	48 \pm 1V
Over voltage recover	14.8V \pm 0.5V	29.5V \pm 0.5V	59V \pm 1V	14.8V \pm 0.5V	29.5V \pm 0.5V	59V \pm 1V
Protection function	Low voltage		Alarm at first, voltage continously reduce, LED Red light on & shut down.			
	Over voltage		LED Red light on, shut down.			
	Over load		LED Red light on, shut down.			
	Over temperature		Alarm at first, temperature continously rise, LED Red light on & shut down			
	Short circuit		LED Red light on.			
	Input reverse polarity		Fuse burn-out.			
Working temperature	-10℃~ +50℃					
Storage temperature	-30℃~ +70℃					
Dimension	250x106x63mm					
Packing	295x160x80mm					
Net./gross weight	961/1245g					
QTY/Ctn	15 Pcs					
Meas./Ctn	455x310x390mm					
Gross weight/Ctn	18675g					
Warranty	1 year					
Configuration	Standard					
Cooling method	Intelligent air cooling					

* Product specifications are subject to change without further notice.

600W Pure Sine Wave Power Inverter



Model	ATO-JYP-600					
Rated power	600W					
Peak power	1200W					
Input voltage	DC12V	DC24V	DC48V	DC12V	DC24V	DC48V
Output voltage	100VAC or 110VAC or 120VAC \pm 5%			220VAC or 230VAC or 240VAC \pm 5%		
Unload current less than	0.6A	0.4A	0.3A	0.6A	0.4A	0.3A
Output frequency	50Hz \pm 0.5Hz or 60Hz \pm 0.5Hz					
Output waveform	Pure Sine Wave					
Waveform distortion	THD \leq 3% (Linear load)					
USB port	5V 1A					
Max.efficiency	90%					
Input voltage range	10-15.5V	20-31V	40-61V	10-15.5V	20-31V	40-61V
Low voltage alarm	10.5 \pm 0.5V	21 \pm 0.5V	42 \pm 1V	10.5 \pm 0.5V	21 \pm 0.5V	42 \pm 1V
Low voltage protection	10 \pm 0.5V	20 \pm 0.5V	40 \pm 1.5V	10 \pm 0.5V	20 \pm 0.5V	40 \pm 1.5V
Over voltage protection	15.5 \pm 0.5V	31 \pm 0.5V	61 \pm 1V	15.5 \pm 0.5V	31 \pm 0.5V	61 \pm 1V
Low voltage recover	13 \pm 0.5V	24 \pm 0.5V	48 \pm 1V	13 \pm 0.5V	24 \pm 0.5V	48 \pm 1V
Over voltage recover	14.8V \pm 0.5V	29.5V \pm 0.5V	59V \pm 1V	14.8V \pm 0.5V	29.5V \pm 0.5V	59V \pm 1V
Protection function	Low voltage		Alarm at first, voltage continuously reduce, LED Red light on & shut down.			
	Over voltage		LED Red light on, shut down.			
	Over load		LED Red light on, shut down.			
	Over temperature		Alarm at first, temperature continuously rise, LED Red light on & shut down.			
	Short circuit		LED Red light on.			
	Input reverse polarity		Fuse burn-out.			
Working temperature	-10 $^{\circ}$ C \sim +50 $^{\circ}$ C					
Storage temperature	-30 $^{\circ}$ C \sim +70 $^{\circ}$ C					
Dimension	250x106x63mm					
Packing	295x160x80mm					
Net./gross weight	961/1245g					
QTY/Ctn	15 Pcs					
Meas./Ctn	455x310x390mm					
Gross weight/Ctn	18675g					
Warranty	1 year					
Configuration	Standard					
Cooling method	Intelligent air cooling					

* Product specifications are subject to change without further notice.

800W Pure Sine Wave Power Inverter



Model	ATO-JYP-800					
Rated power	800W					
Peak power	1600W					
Input voltage	DC12V	DC24V	DC48V	DC12V	DC24V	DC48V
Output voltage	100VAC or 110VAC or 120VAC±5%			220VAC or 230VAC or 240VAC±5%		
Unload current less than	0.8A	0.5A	0.3A	0.8A	0.5A	0.3A
Output frequency	50Hz±0.5Hz or 60Hz±0.5Hz					
Output waveform	Pure Sine Wave					
Waveform distortion	THD<3% (Linear load)					
USB port	5V 1A					
Max.efficiency	90%					
Input voltage range	10-15.5V	20-31V	40-61V	10-15.5V	20-31V	40-61V
Low voltage alarm	10.5±0.5V	21±0.5V	42±1V	10.5±0.5V	21±0.5V	42±1V
Low voltage protection	10±0.5V	20±0.5V	40±1.5V	10±0.5V	20±0.5V	40±1.5V
Over voltage protection	15.5±0.5V	31±0.5V	61±1V	15.5±0.5V	31±0.5V	61±1V
Low voltage recover	13±0.5V	24±0.5V	48±1V	13±0.5V	24±0.5V	48±1V
Over voltage recover	14.8V±0.5V	29.5V±0.5V	59V±1V	14.8V±0.5V	29.5V±0.5V	59V±1V
Protection function	Low voltage		Alarm at first, voltage continously reduce, LED Red light on & shut down.			
	Over voltage		LED Red light on, shut down.			
	Over load		LED Red light on, shut down.			
	Over temperature		Alarm at first, temperature continously rise. LED Red light on & shut down.			
	Short circuit		LED Red light on.			
	Input reverse polarity		Fuse burn-out.			
Working temperature	-10℃~ +50℃					
Storage temperature	-30℃~ +70℃					
Dimension	278x135x78mm					
Packing	355x180x95mm					
Net./gross weight	1660/2160g					
QTY/Ctn	10 Pcs					
Meas./Ctn	465x375x435mm					
Gross weight/Ctn	21600g					
Warranty	1 year					
Configuration	Standard					
Cooling method	Intelligent air cooling					

* Product specifications are subject to change without further notice.

1000W Pure Sine Wave Power Inverter



Model	ATO-JYP-1K					
Rated power	1000W					
Peak power	2000W					
Input voltage	DC12V	DC24V	DC48V	DC12V	DC24V	DC48V
Output voltage	100VAC or 110VAC or 120VAC±5%			220VAC or 230VAC or 240VAC±5%		
Unload current less than	0.8A	0.5A	0.3A	0.8A	0.5A	0.3A
Output frequency	50Hz±0.5Hz or 60Hz±0.5Hz					
Output waveform	Pure Sine Wave					
Waveform distortion	THD<3% (Linear load)					
USB port	5V 1A					
Max.efficiency	90%					
Input voltage range	10-15.5V	20-31V	40-61V	10-15.5V	20-31V	40-61V
Low voltage alarm	10.5±0.5V	21±0.5V	42±1V	10.5±0.5V	21±0.5V	42±1V
Low voltage protection	10±0.5V	20±0.5V	40±1.5V	10±0.5V	20±0.5V	40±1.5V
Over voltage protection	15.5±0.5V	31±0.5V	61±1V	15.5±0.5V	31±0.5V	61±1V
Low voltage recover	13±0.5V	24±0.5V	48±1V	13±0.5V	24±0.5V	48±1V
Over voltage recover	14.8V±0.5V	29.5V±0.5V	59V±1V	14.8V±0.5V	29.5V±0.5V	59V±1V
Protection function	Low voltage		Alarm at first, voltage continously reduce, LED Red light on & shut down.			
	Over voltage		LED Red light on, shut down.			
	Over load		LED Red light on, shut down.			
	Over temperature		Alarm at first, temperature continously rise, LED Red light on & shut down.			
	Short circuit		LED Red light on.			
	Input reverse polarity		Fuse burn-out.			
Working temperature	-10℃~ +50℃					
Storage temperature	-30℃~ +70℃					
Dimension	308x135x78mm					
Packing	355x180x95mm					
Net./gross weight	1955/2455g					
QTY/Ctn	10 Pcs					
Meas./Ctn	465x375x435mm					
Gross weight/Ctn	24550g					
Warranty	1 years					
Configuration	Standard					
Cooling method	Intelligent air cooling					

* Product specifications are subject to change without further notice.

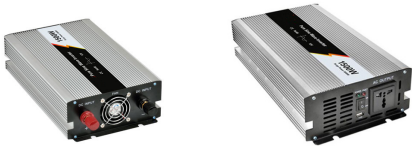
1200W Pure Sine Wave Power Inverter



Model	ATO-JYP-1.2K					
Rated power	1200W					
Peak power	2400W					
Input voltage	DC12V	DC24V	DC48V	DC12V	DC24V	DC48V
Output voltage	100VAC or 110VAC or 120VAC \pm 5%			220VAC or 230VAC or 240VAC \pm 5%		
Unload current less than	0.8A	0.5A	0.3A	0.8A	0.5A	0.3A
Output frequency	50Hz \pm 0.5Hz or 60Hz \pm 0.5Hz					
Output waveform	Pure Sine Wave					
Waveform distortion	THD \leq 3% (Linear load)					
USB port	5V 1A					
Max.efficiency	90%					
Input voltage range	10-15.5V	20-31V	40-61V	10-15.5V	20-31V	40-61V
Low voltage alarm	10.5 \pm 0.5V	21 \pm 0.5V	42 \pm 1V	10.5 \pm 0.5V	21 \pm 0.5V	42 \pm 1V
Low voltage protection	10 \pm 0.5V	20 \pm 0.5V	40 \pm 1.5V	10 \pm 0.5V	20 \pm 0.5V	40 \pm 1.5V
Over voltage protection	15.5 \pm 0.5V	31 \pm 0.5V	61 \pm 1V	15.5 \pm 0.5V	31 \pm 0.5V	61 \pm 1V
Low voltage recover	13 \pm 0.5V	24 \pm 0.5V	48 \pm 1V	13 \pm 0.5V	24 \pm 0.5V	48 \pm 1V
Over voltage recover	14.8V \pm 0.5V	29.5V \pm 0.5V	59V \pm 1V	14.8V \pm 0.5V	29.5V \pm 0.5V	59V \pm 1V
Protection function	Low voltage		Alarm at first, voltage continously reduce, LED Red light on & shut down.			
	Over voltage		LED Red light on, shut down.			
	Over load		LED Red light on, shut down.			
	Over temperature		Alarm at first, temperature continously rise, LED Red light on & shut down.			
	Short circuit		LED Red light on.			
	Input reverse polarity		Fuse burn-out.			
Working temperature	-10 $^{\circ}$ C \sim +50 $^{\circ}$ C					
Storage temperature	-30 $^{\circ}$ C \sim +70 $^{\circ}$ C					
Dimension	296x180x78mm					
Packing	360x335x100mm					
Net./gross weight	2760/3230g					
QTY/Ctn	8 Pcs					
Meas./Ctn	500x400x415mm					
Gross weight/Ctn	25840g					
Warranty	1 year					
Configuration	Standard					
Cooling method	Intelligent air cooling					

* Product specifications are subject to change without further notice.

1500W Pure Sine Wave Power Inverter



Model	ATO-JYP-1.5K					
Rated power	1500W					
Peak power	3000W					
Input voltage	DC12V	DC24V	DC48V	DC12V	DC24V	DC48V
Output voltage	100VAC or 110VAC or 120VAC±5%			220VAC or 230VAC or 240VAC±5%		
Unload current less than	1.1A	0.7A	0.5A	1.1A	0.7A	0.5A
Output frequency	50Hz±0.5Hz or 60Hz±0.5Hz					
Output waveform	Pure Sine Wave					
Waveform distortion	THD<3% (Linear load)					
USB port	5V 1A					
Max.efficiency	90%					
Input voltage range	10-15.5V	20-31V	40-61V	10-15.5V	20-31V	40-61V
Low voltage alarm	10.5±0.5V	21±0.5V	42±1V	10.5±0.5V	21±0.5V	42±1V
Low voltage protection	10±0.5V	20±0.5V	40±1.5V	10±0.5V	20±0.5V	40±1.5V
Over voltage protection	15.5±0.5V	31±0.5V	61±1V	15.5±0.5V	31±0.5V	61±1V
Low voltage recover	13±0.5V	24±0.5V	48±1V	13±0.5V	24±0.5V	48±1V
Over voltage recover	14.8V±0.5V	29.5V±0.5V	59V±1V	14.8V±0.5V	29.5V±0.5V	59V±1V
Protection function	Low voltage		Alarm at first, voltage continously reduce, LED Red light on & shut down.			
	Over voltage		LED Red light on, shut down.			
	Over load		LED Red light on, shut down.			
	Over temperature		Alarm at first, temperature continously rise, LED Red light on & shut down.			
	Short circuit		LED Red light on.			
	Input reverse polarity		Fuse burn-out.			
Working temperature	-10℃~ +50℃					
Storage temperature	-30℃~ +70℃					
Dimension	310x180x78mm					
Packing	445x240x145mm					
Net./gross weight	3100/3732g					
QTY/Ctn	5 Pcs					
Meas./Ctn	500x400x415mm					
Gross weight/Ctn	18660g					
Warranty	1 year					
Configuration	Standard					
Cooling method	Intelligent air cooling					

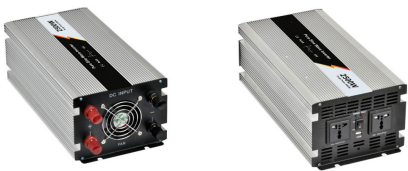
* Product specifications are subject to change without further notice.

2000W Pure Sine Wave Power Inverter



Model	ATO-JYP-2K					
Rated power	2000W					
Peak power	4000W					
Input voltage	DC12V	DC24V	DC48V	DC12V	DC24V	DC48V
Output voltage	100VAC or 110VAC or 120VAC \pm 5%			220VAC or 230VAC or 240VAC \pm 5%		
Unload current less than	1.1A	0.7A	0.5A	1.1A	0.7A	0.5A
Output frequency	50Hz \pm 0.5Hz or 60Hz \pm 0.5Hz					
Output waveform	Pure Sine Wave					
Waveform distortion	THD \leq 3% (Linear load)					
USB port	5V 1A					
Max.efficiency	90%					
Input voltage range	10-15.5V	20-31V	40-61V	10-15.5V	20-31V	40-61V
Low voltage alarm	10.5 \pm 0.5V	21 \pm 0.5V	42 \pm 1V	10.5 \pm 0.5V	21 \pm 0.5V	42 \pm 1V
Low voltage protection	10 \pm 0.5V	20 \pm 0.5V	40 \pm 1.5V	10 \pm 0.5V	20 \pm 0.5V	40 \pm 1.5V
Over voltage protection	15.5 \pm 0.5V	31 \pm 0.5V	61 \pm 1V	15.5 \pm 0.5V	31 \pm 0.5V	61 \pm 1V
Low voltage recover	13 \pm 0.5V	24 \pm 0.5V	48 \pm 1V	13 \pm 0.5V	24 \pm 0.5V	48 \pm 1V
Over voltage recover	14.8V \pm 0.5V	29.5V \pm 0.5V	59V \pm 1V	14.8V \pm 0.5V	29.5V \pm 0.5V	59V \pm 1V
Protection function	Low voltage		Alarm at first, voltage continuously reduce, LED Red light on & shut down.			
	Over voltage		LED Red light on, shut down.			
	Over load		LED Red light on, shut down.			
	Over temperature		Alarm at first, temperature continuously rise, LED Red light on & shut down.			
	Short circuit		LED Red light on.			
	Input reverse polarity		Fuse burn-out.			
Working temperature	-10℃~ +50℃					
Storage temperature	-30℃~ +70℃					
Dimension	396x180x78mm					
Packing	445x240x145mm					
Net./gross weight	3935/4676g					
QTY/Ctn	4 Pcs					
Meas./Ctn	520x340x515mm					
Gross weight/Ctn	18710g					
Warranty	1 year					
Configuration	Standard					
Cooling method	Intelligent air cooling					

2500W Pure Sine Wave Power Inverter



Model	ATO-JYP-2.5K					
Rated power	2500W					
Peak power	5000W					
Input voltage	DC12V	DC24V	DC48V	DC12V	DC24V	DC48V
Output voltage	100VAC or 110VAC or 120VAC \pm 5%			220VAC or 230VAC or 240VAC \pm 5%		
Unload current less than	1.3A	0.8A	0.6A	1.3A	0.8A	0.6A
Output frequency	50Hz \pm 0.5Hz or 60Hz \pm 0.5Hz					
Output waveform	Pure Sine Wave					
Waveform distortion	THD \leq 3% (Linear load)					
USB port	5V 1A					
Max.efficiency	90%					
Input voltage range	10-15.5V	20-31V	40-61V	10-15.5V	20-31V	40-61V
Low voltage alarm	10.5 \pm 0.5V	21 \pm 0.5V	42 \pm 1V	10.5 \pm 0.5V	21 \pm 0.5V	42 \pm 1V
Low voltage protection	10 \pm 0.5V	20 \pm 0.5V	40 \pm 1.5V	10 \pm 0.5V	20 \pm 0.5V	40 \pm 1.5V
Over voltage protection	15.5 \pm 0.5V	31 \pm 0.5V	61 \pm 1V	15.5 \pm 0.5V	31 \pm 0.5V	61 \pm 1V
Low voltage recover	13 \pm 0.5V	24 \pm 0.5V	48 \pm 1V	13 \pm 0.5V	24 \pm 0.5V	48 \pm 1V
Over voltage recover	14.8V \pm 0.5V	29.5V \pm 0.5V	59V \pm 1V	14.8V \pm 0.5V	29.5V \pm 0.5V	59V \pm 1V
Protection function	Low voltage		Alarm at first, voltage continously reduce, LED Red light on & shut down.			
	Over voltage		LED Red light on, shut down.			
	Over load		LED Red light on, shut down.			
	Over temperature		Alarm at first, temperature continously rise. LED Red light on & shut down.			
	Short circuit		LED Red light on.			
	Input reverse polarity		Fuse burn-out.			
Working temperature	-10℃~ +50℃					
Storage temperature	-30℃~ +70℃					
Dimension	396x180x128mm					
Packing	475x245x195mm					
Net./gross weight	5580/6710g					
QTY/Ctn	4 Pcs					
Meas./Ctn	540x545x445mm					
Gross weight/Ctn	26840g					
Warranty	1 year					
Configuration	Standard					
Cooling method	Intelligent air cooling					

* Product specifications are subject to change without further notice.

3000W Pure Sine Wave Power Inverter



Model	ATO-JYP-3K					
Rated power	3000W					
Peak power	6000W					
Input voltage	DC12V	DC24V	DC48V	DC12V	DC24V	DC48V
Output voltage	100VAC or 110VAC or 120VAC \pm 5%			220VAC or 230VAC or 240VAC \pm 5%		
Unload current less than	1.3A	0.8A	0.6A	1.3A	0.8A	0.6A
Output frequency	50Hz \pm 0.5Hz or 60Hz \pm 0.5Hz					
Output waveform	Pure Sine Wave					
Waveform distortion	THD \leq 3% (Linear load)					
USB port	5V 1A					
Max.efficiency	90%					
Input voltage range	10-15.5V	20-31V	40-61V	10-15.5V	20-31V	40-61V
Low voltage alarm	10.5 \pm 0.5V	21 \pm 0.5V	42 \pm 1V	10.5 \pm 0.5V	21 \pm 0.5V	42 \pm 1V
Low voltage protection	10 \pm 0.5V	20 \pm 0.5V	40 \pm 1.5V	10 \pm 0.5V	20 \pm 0.5V	40 \pm 1.5V
Over voltage protection	15.5 \pm 0.5V	31 \pm 0.5V	61 \pm 1V	15.5 \pm 0.5V	31 \pm 0.5V	61 \pm 1V
Low voltage recover	13 \pm 0.5V	24 \pm 0.5V	48 \pm 1V	13 \pm 0.5V	24 \pm 0.5V	48 \pm 1V
Over voltage recover	14.8V \pm 0.5V	29.5V \pm 0.5V	59V \pm 1V	14.8V \pm 0.5V	29.5V \pm 0.5V	59V \pm 1V
Protection function	Low voltage		Alarm at first, voltage continously reduce, LED Red light on & shut down.			
	Over voltage		LED Red light on, shut down.			
	Over load		LED Red light on, shut down.			
	Over temperature		Alarm at first, temperature continously rise, LED Red light on & shut down.			
	Short circuit		LED Red light on.			
	Input reverse polarity		Fuse burn-out.			
Working temperature	-10 $^{\circ}$ C \sim +50 $^{\circ}$ C					
Storage temperature	-30 $^{\circ}$ C \sim +70 $^{\circ}$ C					
Dimension	396x180x128mm					
Packing	475x245x195mm					
Net./gross weight	5580/6710g					
QTY/Ctn	4 Pcs					
Meas./Ctn	540x545x445mm					
Gross weight/Ctn	26840g					
Warranty	1 year					
Configuration	Standard					
Cooling method	Intelligent air cooling					

* Product specifications are subject to change without further notice.

4000W Pure Sine Wave Power Inverter



Model	ATO-JYP-4K					
Rated power	4000W					
Peak power	8000W					
Input voltage	DC12V	DC24V	DC48V	DC12V	DC24V	DC48V
Output voltage	100VAC or 110VAC or 120VAC±5%			220VAC or 230VAC or 240VAC±5%		
Unload current less than	1.5A	1.0A	0.8A	1.5A	1.0A	0.8A
Output frequency	50Hz±0.5Hz or 60Hz±0.5Hz					
Output waveform	Pure Sine Wave					
Waveform distortion	THD<3% (Linear load)					
USB port	5V 1A					
Max.efficiency	90%					
Input voltage range	10-15.5V	20-31V	40-61V	10-15.5V	20-31V	40-61V
Low voltage alarm	10.5±0.5V	21±0.5V	42±1V	10.5±0.5V	21±0.5V	42±1V
Low voltage protection	10±0.5V	20±0.5V	40±1.5V	10±0.5V	20±0.5V	40±1.5V
Over voltage protection	15.5±0.5V	31±0.5V	61±1V	15.5±0.5V	31±0.5V	61±1V
Low voltage recover	13±0.5V	24±0.5V	48±1V	13±0.5V	24±0.5V	48±1V
Over voltage recover	14.8V±0.5V	29.5V±0.5V	59V±1V	14.8V±0.5V	29.5V±0.5V	59V±1V
Protection function	Low voltage		Alarm at first, voltage continously reduce, LED Red light on & shut down.			
	Over voltage		LED Red light on, shut down.			
	Over load		LED Red light on, shut down.			
	Over temperature		Alarm at first, temperature continously rise, LED Red light on & shut down.			
	Short circuit		LED Red light on.			
	Input reverse polarity		Fuse burn-out.			
Working temperature	-10℃~ +50℃					
Storage temperature	-30℃~ +70℃					
Dimension	459x210x156mm					
Packing	545x300x245mm					
Net./gross weight	10000/12063g					
QTY/Ctn	4 Pcs					
Meas./Ctn	530x665x605mm					
Gross weight/Ctn	48252g					
Warranty	1 year					
Configuration	Standard					
Cooling method	Intelligent air cooling					

* Product specifications are subject to change without further notice.

5000W Pure Sine Wave Power Inverter



Model	ATO-JYP-5K					
Rated power	5000W					
Peak power	10000W					
Input voltage	DC12V	DC24V	DC48V	DC12V	DC24V	DC48V
Output voltage	100VAC or 110VAC or 120VAC±5%			220VAC or 230VAC or 240VAC±5%		
Unload current less than	1.5A	1.0A	0.8A	1.5A	1.0A	0.8A
Output frequency	50Hz±0.5Hz or 60Hz±0.5Hz					
Output waveform	Pure Sine Wave					
Waveform distortion	THD<3% (Linear load)					
USB port	5V 1A					
Max.efficiency	90%					
Input voltage range	10-15.5V	20-31V	40-61V	10-15.5V	20-31V	40-61V
Low voltage alarm	10.5±0.5V	21±0.5V	42±1V	10.5±0.5V	21±0.5V	42±1V
Low voltage protection	10±0.5V	20±0.5V	40±1.5V	10±0.5V	20±0.5V	40±1.5V
Over voltage protection	15.5±0.5V	31±0.5V	61±1V	15.5±0.5V	31±0.5V	61±1V
Low voltage recover	13±0.5V	24±0.5V	48±1V	13±0.5V	24±0.5V	48±1V
Over voltage recover	14.8V±0.5V	29.5V±0.5V	59V±1V	14.8V±0.5V	29.5V±0.5V	59V±1V
Protection function	Low voltage		Alarm at first, voltage continously reduce, LED Red light on & shut down.			
	Over voltage		LED Red light on, shut down.			
	Over load		LED Red light on, shut down.			
	Over temperature		Alarm at first, temperature continously rise, LED Red light on & shut down			
	Short circuit		LED Red light on.			
	Input reverse polarity		Fuse burn-out.			
Working temperature	-10℃~ +50℃					
Storage temperature	-30℃~ +70℃					
Dimension	519x210x156mm					
Packing	545x300x245mm					
Net./gross weight	10570/12633g					
QTY/Ctn	4 Pcs					
Meas./Ctn	530x665x605mm					
Gross weight/Ctn	50532g					
Warranty	1 year					
Configuration	Standard					
Cooling method	Intelligent air cooling					

* Product specifications are subject to change without further notice.

6000W Pure Sine Wave Power Inverter



Model	ATO-JYP-6K					
Rated power	6000W					
Peak power	12000W					
Input voltage	DC12V	DC24V	DC48V	DC12V	DC24V	DC48V
Output voltage	100VAC or 110VAC or 120VAC±5%			220VAC or 230VAC or 240VAC±5%		
Unload current less than	1.5A	1.0A	0.8A	1.5A	1.0A	0.8A
Output frequency	50Hz±0.5Hz or 60Hz±0.5Hz					
Output waveform	Pure Sine Wave					
Waveform distortion	THD<3% (Linear load)					
USB port	5V 1A					
Max.efficiency	90%					
Input voltage range	10-15.5V	20-31V	40-61V	10-15.5V	20-31V	40-61V
Low voltage alarm	10.5±0.5V	21±0.5V	42±1V	10.5±0.5V	21±0.5V	42±1V
Low voltage protection	10±0.5V	20±0.5V	40±1.5V	10±0.5V	20±0.5V	40±1.5V
Over voltage protection	15.5±0.5V	31±0.5V	61±1V	15.5±0.5V	31±0.5V	61±1V
Low voltage recover	13±0.5V	24±0.5V	48±1V	13±0.5V	24±0.5V	48±1V
Over voltage recover	14.8V±0.5V	29.5V±0.5V	59V±1V	14.8V±0.5V	29.5V±0.5V	59V±1V
Protection function	Low voltage		Alarm at first, voltage continously reduce, LED Red light on & shut down.			
	Over voltage		LED Red light on, shut down.			
	Over load		LED Red light on, shut down.			
	Over temperature		Alarm at first, temprature continously rise, LED Red light on & shut down.			
	Short circuit		LED Red light on.			
	Input reverse polarity		Fuse burn-out.			
Working temperature	-10℃~ +50℃					
Storage temperature	-30℃~ +70℃					
Dimension	519x210x156mm					
Packing	545x300x245mm					
Net./gross weight	10570/12633g					
QTY/Ctn	4 Pcs					
Meas./Ctn	530x665x605mm					
Gross weight/Ctn	50532g					
Warranty	1 year					
Configuration	Standard					
Cooling method	Intelligent air cooling					

* Product specifications are subject to change without further notice.