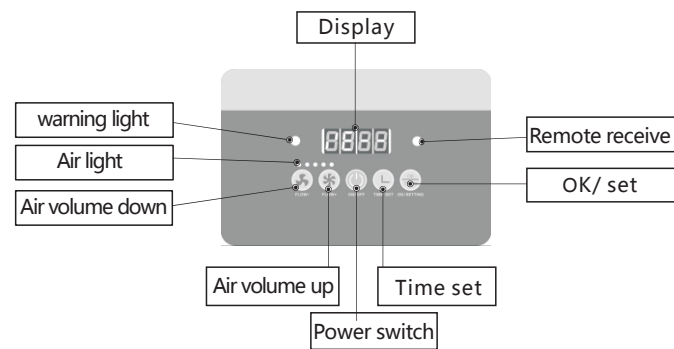
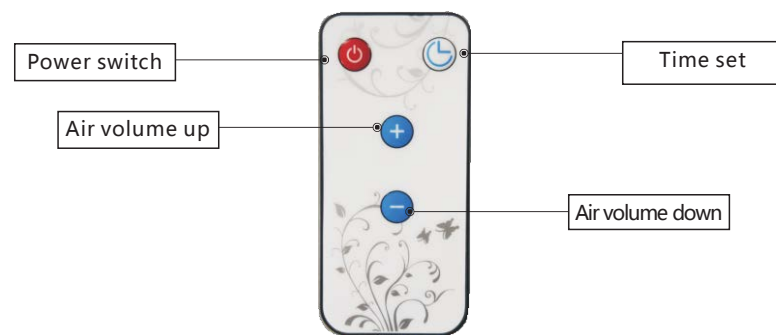


3. Illustration of Control Panel:



4. Illustration of Remote Control:



5. Functions of buttons

- ◆ Power Switch button
Press the power switch and the red light is on. The machine starts to work. Turn off the red light, the machine will stop running.
(Attention: In case of long time shutdown, please turn off the main power switch on the machine and unplug the power plug.)
- ◆ Air volume up button
Acceleration button: the fan speeds up 10% per touch, and it is divided into 10 gears, reaching full speed on 10 consecutive times.
- ◆ Air volume down button
Deceleration button: 10% of the fan is decelerated each time, and at full speed, the fan will be stopped for ten times.
- ◆ Time set button
Deceleration button: 10% of the fan is decelerated each time, and at full speed, the fan will be stopped for ten times.

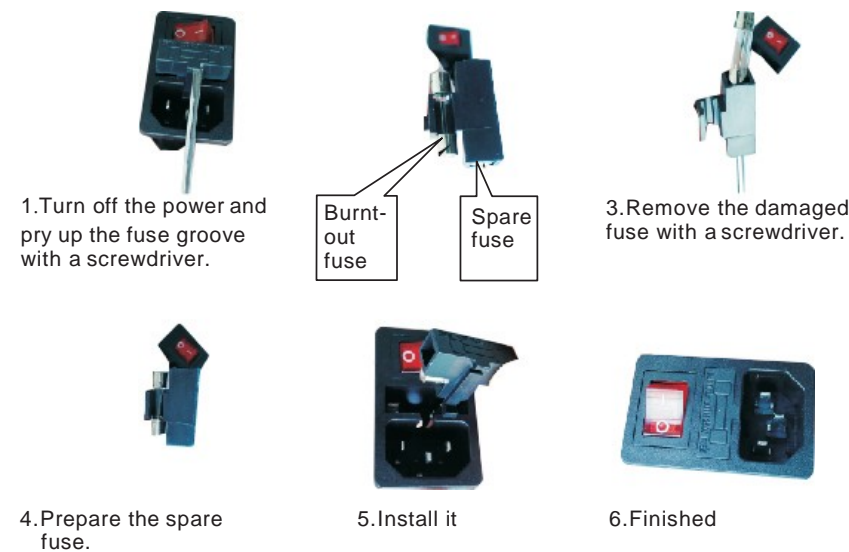
8. Troubleshooting

- ◆ Make sure the power is switched off before inspecting or repairing!
- Problem 1:** The machine still works, but the air flow is very weak and suction power is greatly reduced.
Cause: Air Inlet is blocked or foreign body exists inside the duct. The filter becomes saturated and hence gets blocked and gives an alarm.
Solution: Turn off the power and open the top cover. Check if there is any foreign body blocked in the air inlet. Then check if the air vent is blocked or not. If the suction power of the empty-loaded machine is normal, it means the filter needs to be replaced.

Problem 2: The machine shuts down automatically after it is just started. Even if you restart the machine, the same problem happens again.
Cause: The air flow inside the machine is not smooth. The obstruction of the filter is very strong. As a result, the starting current of the fan becomes very high, hence the machine shuts down automatically for self protection.
Solution: Turn off the power and open the top cover. Check if there is any foreign body blocked in the air inlet. Then turn the speed-adjusting knob to the lowest level and restart the machine. The machine will be back to normal.

3. Turn the power switch on if the power indicator does not light up, the fuse might be bad and needs to be replaced, the replacement fuse steps:

Operation steps to replace the fuse:

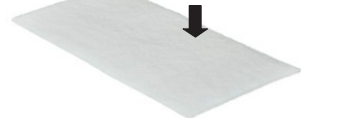


If the trouble remains after these inspections and maintenance, please contact the manufacturer or dealer.

9. How to use and maintain the filters

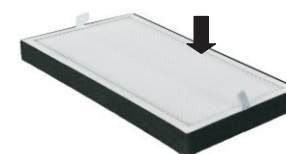
This product uses replaceable filtering consumables. When the consumables have been used to a certain extent, they need to be cleaned or replaced, in order to guarantee the good purifying effect of the machine.

1. Pre-filter
2. Middle Filter



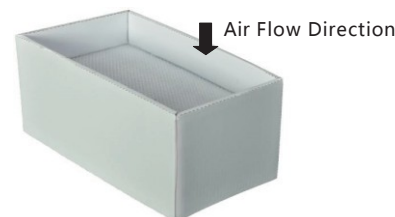
Using method: Place the Pre-filter on top of Middle Filter. The front side (rough side) is facing upwards (air inlet direction). When the accumulated dust on the Pre-filter is over 70% and cannot be cleaned any more, please replace the Pre-filter with a new one.

Air Flow Direction



Using method: With the handle side facing up, put the Middle Filter inside the Main Filter. It shall be immediately cleaned off when the accumulated dust on the Middle Filter evidently affects the suction power. When it cannot be cleaned any more, please replace the Middle Filter with a new one.

3. Main Filter



Using method: With the handle side facing up, place the Main Filter at the bottom inside the machine. When it cannot effectively eliminate the peculiar smell in the smoke, please replace it with a new one.

10. Attentions

1. The power input of this product shall be used within the specified nominal voltage scope (subject to power identification on the product body). It's strictly forbidden for the use with excessive high or low voltage, if the ambient voltage is unstable, please turn off the machine · unplug the power plug and use it again upon power stabilizing.
2. While using the machine, the ambient temperature range of the gas and the dust sucked into the air inlet: atmospheric temperature - 60 °C, never use it when the temperature is higher or lower than this temperature scope.
3. When using the machine, the humidity of the gas and the dust sucked into the air inlet should be between 40%-80%. If the humidity is excessively high, the filter element will become invalid rapidly and the internal circuit will be damaged, never use it when the humidity is higher than 80%.
4. When the machine has a primary cotton filter, properly install the primary cotton filter before use, primary cotton filter can be classified as disposable consumable and never use it again after washing, please replace the primary cotton filter configured by the original manufacturer, regularly, never use the machine without primary cotton filter or with poor primary cotton filter, (poor or washed primary cotton filter over the market performs poorly and medium and high-efficiency filter element in the subsequent stages will be blocked up or become invalid quickly and cause greater losses.)
5. It's strictly forbidden to use this machine without a filter element, because the cooking fume or the dust particle sucked in the machine directly would cause damage to the air blower and control system. Any fault caused by machine use under the aforesaid status shall be serviced at the user's own cost, there for greater losses can be caused.
6. It's not permitted to continue to use the machine when the filter element or the filter cotton is blocked up. This will greatly shorten the service life of the machine, even damage the machine, please clean and maintain the machine regularly and replace the filter element regularly to ensure the machine's working in good condition.

7. In case your machine filter element is blocked up, the suction force is lowered or the filter element for foreign odor removal fails for foreign odor removal, it's not permitted to use this machine by reducing the machine's number of layers of the filter elements or without putting in primary filter element or cotton. Please replace it with the filter element and primary filter cotton configured by the original manufacturer.

8. Never open the machine for maintenance by yourself, the warranty sticker on the machine is the only voucher for you to enjoy after-sales service · so please don't tear it up or damage it.

We will not undertake any of the losses above. Such losses are not included in the warranty.