

Data export instructions (applied to WINDOWS system)

Preparation:

- 1, Gas Detector 1 piece (Data storage is turned on and has history records)
- 2, Mini-USB cable 1 piece
- 3, One WINDOWS computer, equipped with WPS or Microsoft Forms (used to open data records).

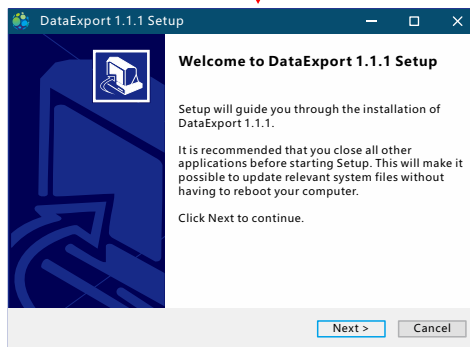
A Detector preparations

The detector is powering on, enters the detection interface and then stands by.

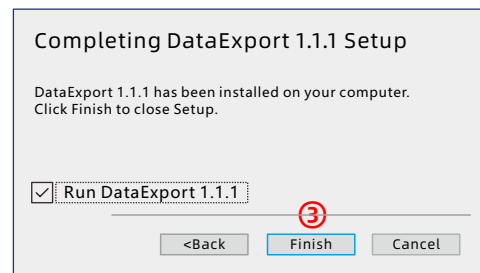
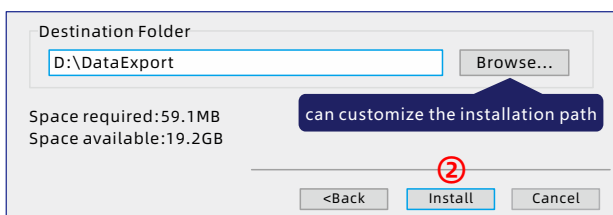
B Computer preparations

The operating system of the host computer is XP or above (WIN10 operating system is recommended). Please contact supplier to get the data export software.

Install the software, as shown in the figure.



Follow the steps to complete the installation.



Step 3, complete the installation, and the icon 4 will appear on the desktop.



C Connect gas detector and computer by USB cable

1. Power on gas detector and the USB cable connect to computer

2. Double-click the desktop icon, such as the icon on the right, to open the software, and the following interface will appear.



D Export steps

① Select the serial port and click COM to preview the serial port.

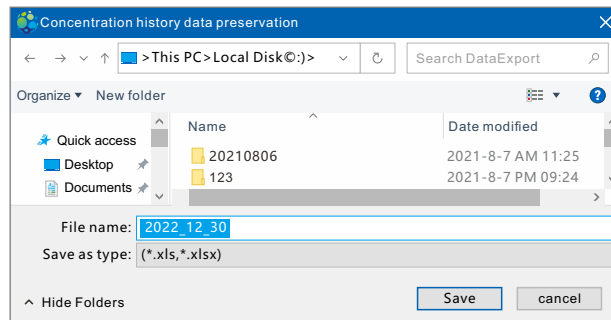
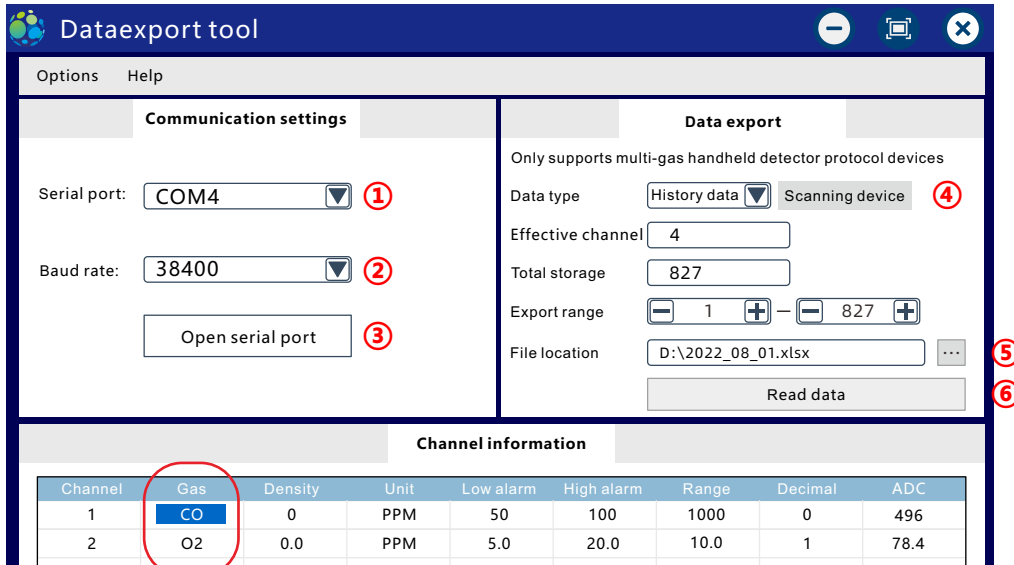
*In this operation example, the computer shows that the serial port is COM4 (for the specific serial port number, please refer to the newly added corresponding detector hardware serial port in the device manager of the computer).

② Select the baud rate, usually 38400.

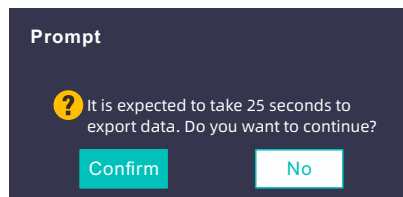
③ After setting, click "Open Serial Port".

④ Click "Scan Devices".

⑤ Click the "File Location" option, and the "Save Concentration History Data" check box will pop up, select the location where the exported file is saved. *Double-click the gas item in the table below to customize the gas name (red box in the figure below), which can be exported to the document synchronously.



⑥ Click "Start Export" to pop up a prompt box (as shown in the figure below) about the required export time, select "OK" and wait for the completion.



E View export file

As shown in the figure, by default, the export operation date is used as the file name (year_month_day.xlsx). Office form software is required to open (WPS or Microsoft Excel).

