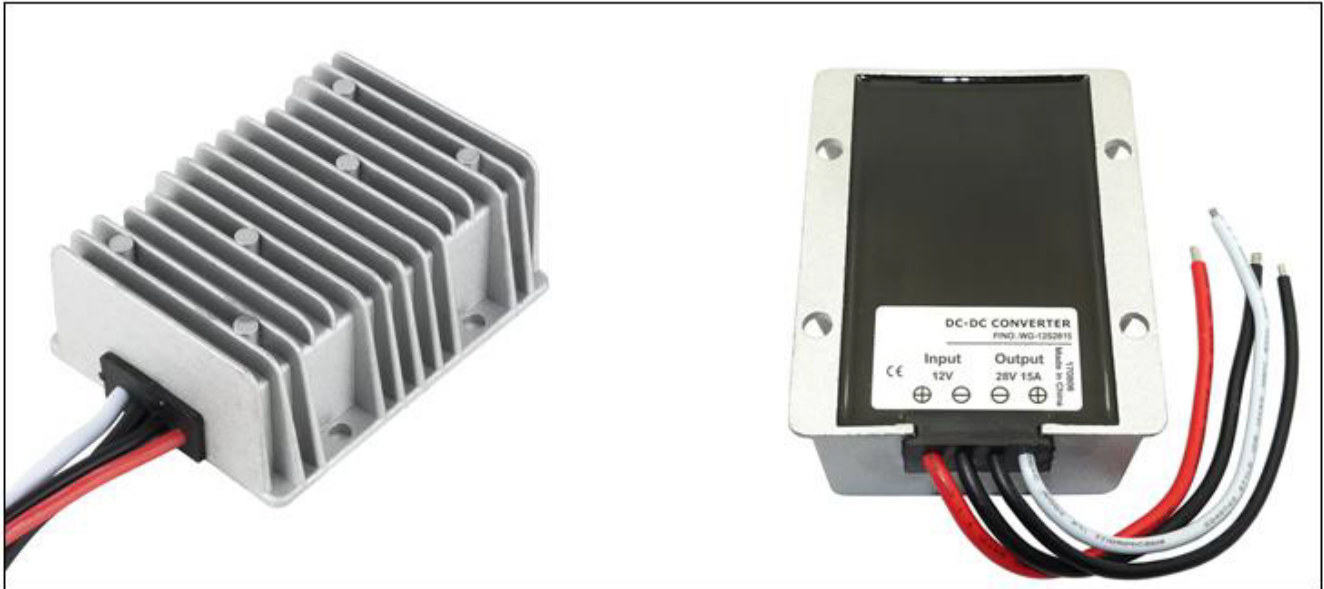


Input voltage	Output voltage	Output current	Output power	Efficiency	Size
10-18V DC	28V DC	15 Amps	420 Watts	95%	100*80*39mm



Features

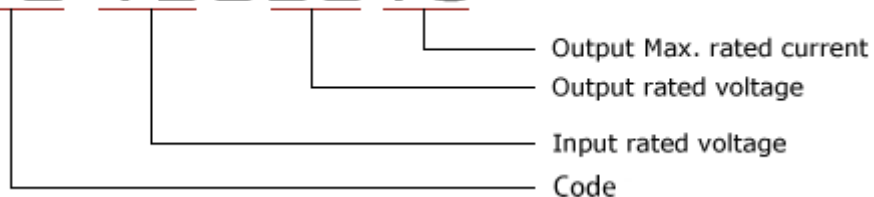
- Design meeting RoHS / CE
- High efficiency: 95% (@ 12V input)
- Non-isolated between input and output
- Internal capacitor: NCC & NICHICON (high reliability)
- 100% full load burn-in test
- Over voltage, Over load, Over temperature protections
- Waterproof level IP68
- 1 Year warranty

Applications

- Trucks
- Forklifts
- Buses
- Logging Vehicles
- Electromotor
- Telecommunications
- Boat & Yacht
- LED Marketplaces and so on..

Model naming method

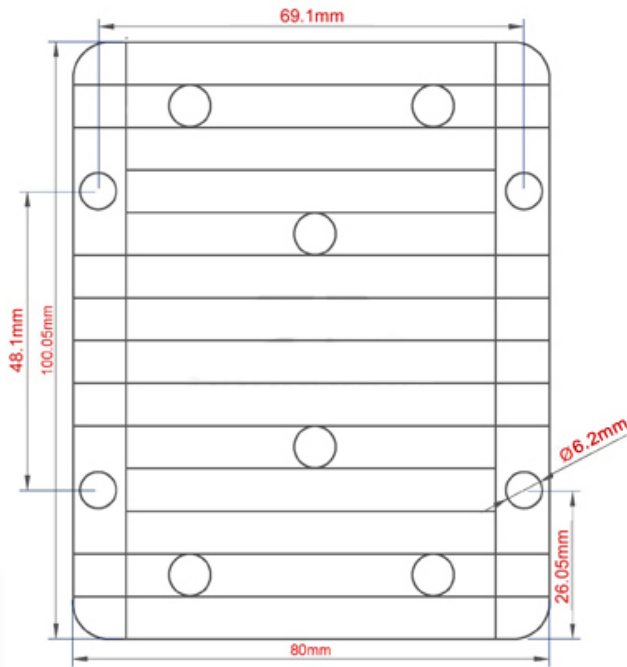
WG-12S2815



Specifications

Model	WG-12S2815		
Input	Rated voltage	V	12
	Voltage range	V	10-18
	Efficiency (type)	%	95% @ 12V input
	Positive cable (red)	AWG	12 @ 15cm length
	Negative cable (black)	AWG	12 @ 15cm length
Output	Voltage	V	28
	Max. rated current	A	15
	Max. rated power	W	420
	Voltage regulation	%	±1
	Load regulation	%	2
	No load loss	mA	70
	Ripple & noise	mV	200
	Positive cable (white)	AWG	14 @ 15cm length
	Negative cable (black)	AWG	14 @ 15cm length
Environment	Working temperature	°c	-35 ~ +80
	Working humidity	RH	10% ~ 90%
	Storage temperature	°c	-40 ~ +85
Function	Short circuit protection		NO
	Over load protection		YES
	Waterproof		IP68
	Over temperature protection		YES
	Over voltage protection		YES
Mechanical	Weight	g	500
	Size	mm	100*80*39
Other	Cooling		Free air convection
	Packaging		White box

Dimension



Shell installation diagram

Thickness : 39mm

