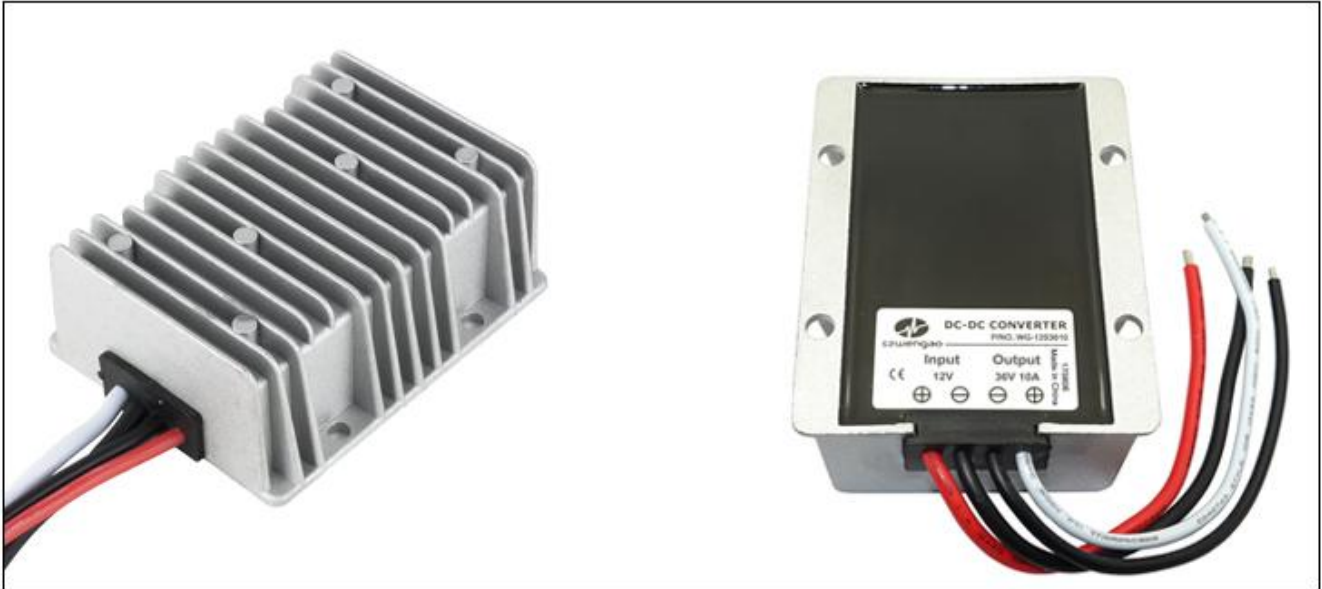


Input voltage	Output voltage	Output current	Output power	Efficiency	Size
10-25V DC	36V DC	10 Amps	360 Watts	94%	100*80*39mm



Features

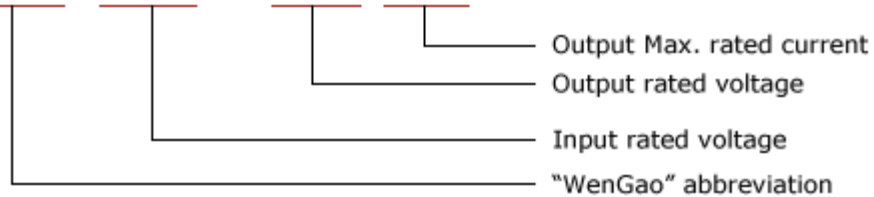
- Design meeting RoHS / CE
- High efficiency: 94% (@ 12V input)
- Non-isolated between input and output
- Internal capacitor: NCC & NICHICON (high reliability)
- 100% full load burn-in test
- Over voltage, Over load, Over temperature protections
- Waterproof level IP68
- 1 Year warranty

Applications

- Trucks
- Forklifts
- Buses
- Logging Vehicles
- Electromotor
- Telecommunications
- Boat & Yacht
- LED Marketplaces and so on..

Model naming method

WG-12S3610



Specifications

Model	WG-12S3610		
Input	Rated voltage	V	12
	Voltage range	V	10-25
	Efficiency (type)	%	94% @ 12V input
	Positive cable (red)	AWG	12 @ 15cm length
	Negative cable (black)	AWG	12 @ 15cm length
Output	Voltage	V	36
	Max. rated current	A	10
	Max. rated power	W	360
	Voltage regulation	%	±1
	Load regulation	%	2
	No load loss	mA	70
	Ripple & noise	mV	200
	Positive cable (white)	AWG	14 @ 15cm length
	Negative cable (black)	AWG	14 @ 15cm length
Environment	Working temperature	°c	-35 ~ +80
	Working humidity	RH	10% ~ 90%
	Storage temperature	°c	-40 ~ +85
Function	Short circuit protection		NO
	Over load protection		YES
	Waterproof		IP68
	Over temperature protection		YES
	Over voltage protection		YES
Mechanical	Weight	g	500
	Size	mm	100*80*39
Other	Cooling		Free air convection
	Packaging		White box

Dimension

100 x 80 x 39 mm

