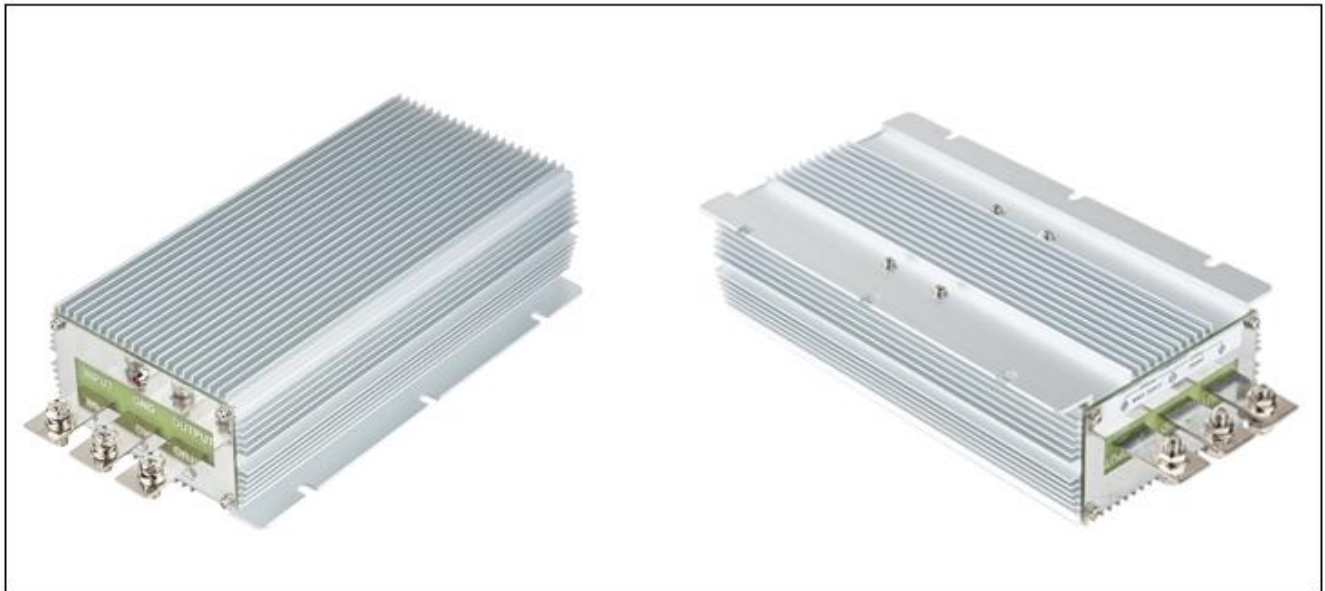


Input voltage	Output voltage	Output current	Output power	Efficiency	Size
18-36V DC	12V DC	85 Amps	1000 Watts	95%	220*127*63mm



Features

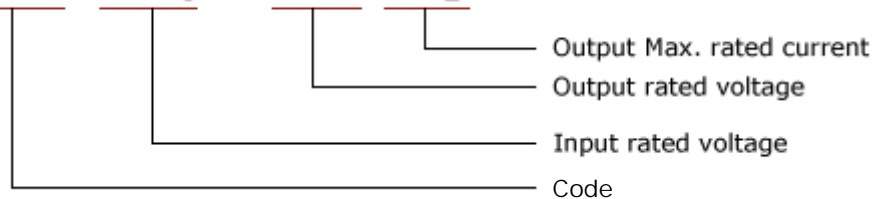
- Design meeting RoHS / CE
- High efficiency: 95% (@ 24V input)
- Non-isolated between input and output
- Internal capacitor: NCC & NICHICON (high reliability)
- 100% full load burn-in test
- Over load, Over temperature and Over voltage protections
- Waterproof level IP68
- 1 Year warranty

Applications

- Trucks
- Forklifts
- Buses
- Logging Vehicles
- Electromotor
- Telecommunications
- Boat & Yacht
- LED Marketplaces and so on..

Model naming method

WG-24S1285



Specifications

Model	WG-24S1285		
Input	Rated voltage	V	24
	Voltage range	V	18-36
	Efficiency (type)	%	95 @ 24V input
Output	Voltage	V	12
	Max. rated current	A	85
	Max. rated power	W	1000
	Voltage regulation	%	±1
	Load regulation	%	2
	No load loss	mA	70 @ 24V input
	Ripple & noise	mVp-p	230 (full load)
Environment	Working temperature	°c	-30 ~ +80
	Working humidity	RH	10% ~ 90%
	Storage temperature	°c	-40 ~ +100
Function	Short circuit protection		YES
	Over current protection		YES
	Waterproof		IP68
	Over temperature protection		YES
	Over voltage protection		YES
Mechanical	Weight	g	2350
	Size	mm	220*127*63
Other	Cooling		Free air convection
	Packaging		Brown box

Dimension

