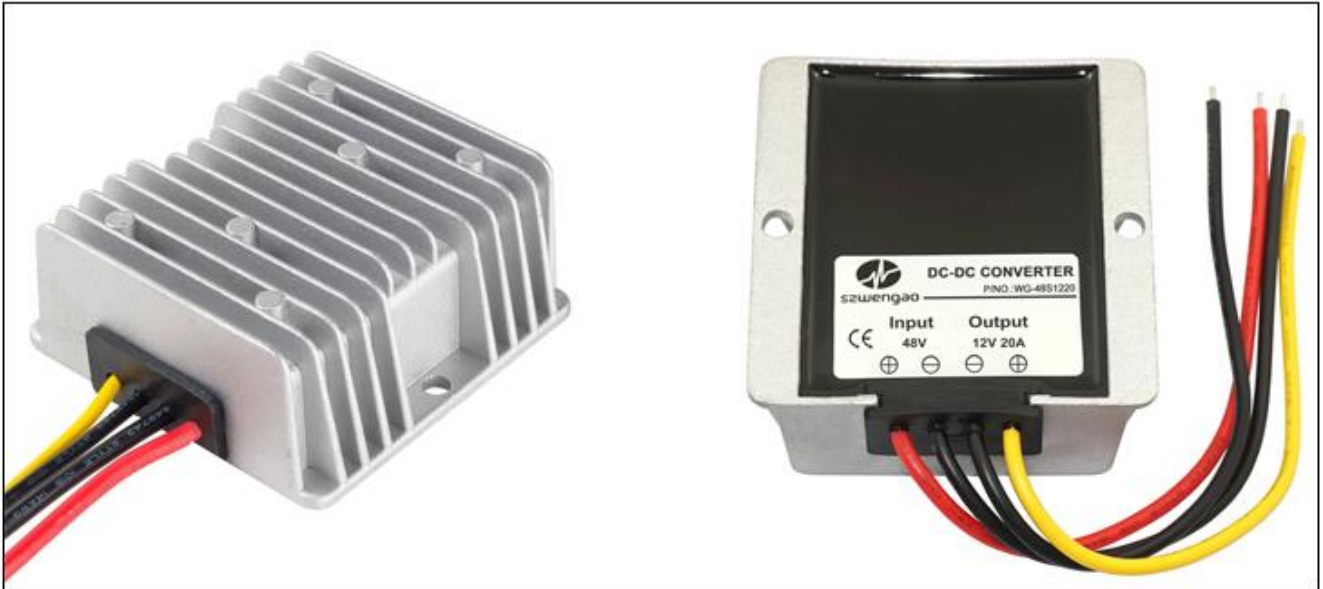


Input voltage	Output voltage	Output current	Output power	Efficiency	Size
35-60V DC	12V DC	20 Amps	240 Watts	94%	74*74*32mm



Features

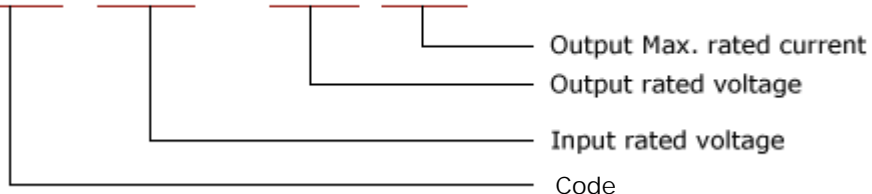
- Design meeting RoHS / CE
- High efficiency: 94% (@ 48V input)
- Non-isolated between input and output
- Internal capacitor: NCC & NICHICON (high reliability)
- 100% full load burn-in test
- Over load, Over temperature and Over voltage protections
- Waterproof level IP68
- 1 Year warranty

Applications

- Trucks
- Forklifts
- Buses
- Logging Vehicles
- Electromotor
- Telecommunications
- Boat & Yacht
- LED Marketplaces and so on..

Model naming method

WG-48S1220



Specifications

Model	WG-48S1220		
Input	Rated voltage	V	48
	Voltage range	V	35-60
	Efficiency (type)	%	94 @ 48V input
	Positive cable (red)	AWG	16 @ 15cm length
	Negative cable (black)	AWG	16 @ 15cm length
Output	Voltage	V	12
	Max. rated current	A	20
	Max. rated power	W	240
	Voltage regulation	%	±1
	Load regulation	%	2
	No load loss	mA	40 @ 48V input
	Ripple & noise	mV	160-200 (full load)
	Positive cable (yellow)	AWG	14 @ 15cm length
	Negative cable (black)	AWG	14 @ 15cm length
Environment	Working temperature	°C	-40 ~ +80
	Working humidity	RH	10% ~ 90%
	Storage temperature	°C	-40 ~ +100
Function	Short circuit protection		YES
	Over current protection	A	@ 22~23A
	Waterproof		IP68
	Over temperature protection		YES
	Over voltage protection		YES
Mechanical	Weight	g	280
	Size	mm	74*74*32
Other	Cooling		Free air convection
	Packaging		White box

Dimension

