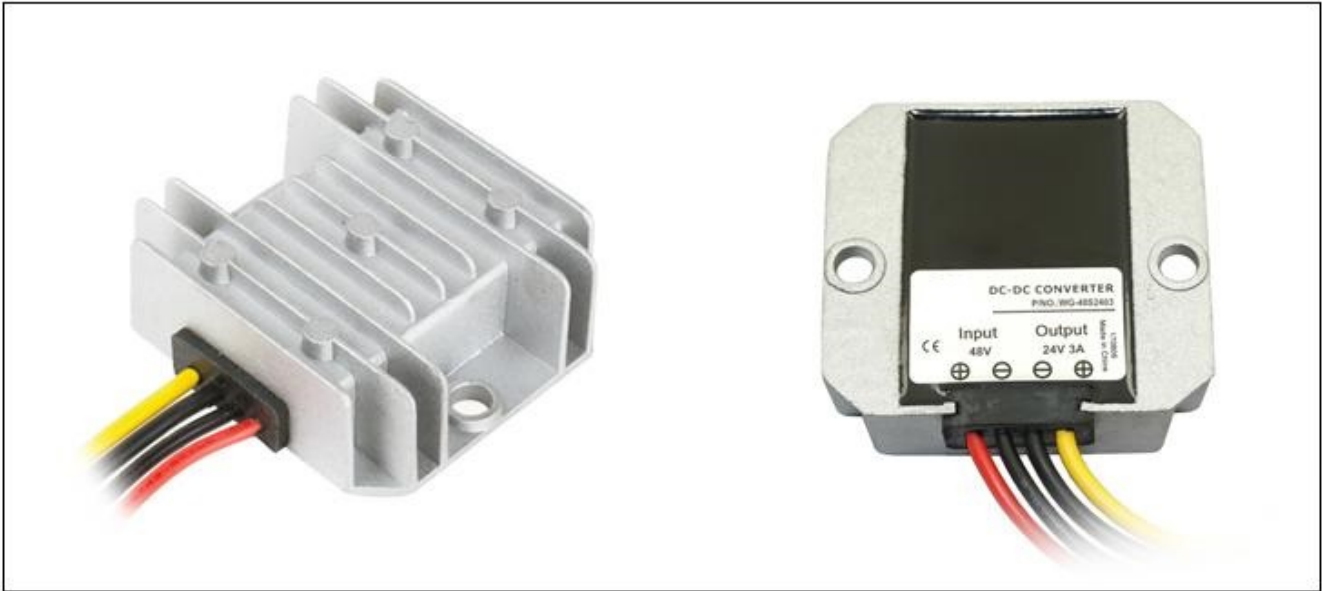


Input voltage	Output voltage	Output current	Output power	Efficiency	Size
35-60V DC	24V DC	3 Amps	72 Watts	92%	57*64*22mm



### Features

- Design meeting RoHS / CE
- High efficiency: 92% ( @ 48V input )
- Non-isolated between input and output
- Internal capacitor: NCC & NICHICON (high reliability)
- 100% full load burn-in test
- Short circuit, Over load, Over temperature protections
- Waterproof level IP68
- 1 Year warranty

### Applications

- Trucks
- Forklifts
- Buses
- Logging Vehicles
- Electromotor
- Telecommunications
- Boat & Yacht
- LED Marketplaces and so on..

### Model naming method

**WG-48S2403**



### Specifications

Model	WG-48S2403		
Input	Rated voltage	V	48
	Voltage range	V	35-60
	Efficiency (type)	%	92% @ 48V input
	Positive cable (red)	AWG	18 @ 16.5cm length
	Negative cable (black)	AWG	18 @ 16.5cm length
Output	Voltage	V	24
	Max. rated current	A	3
	Max. rated power	W	72
	Voltage regulation	%	±1
	Load regulation	%	2
	No load loss	W	0.96 @ 48V input
	Ripple & noise	mV	70
	Positive cable (yellow)	AWG	18 @ 16.5cm length
	Negative cable (black)	AWG	18 @ 16.5cm length
Environment	Working temperature	°C	-40 ~ +80
	Working humidity	RH	10% ~ 90%
	Storage temperature	°C	-40 ~ +100
Function	Short circuit protection		YES
	Over current protection	A	YES
	Waterproof		IP68
	Over temperature protection		YES
	Over voltage protection		YES
Mechanical	Weight	g	108
	Size	mm	57*64*22
Other	Cooling		Free air convection
	Packaging		White box

### Dimension

