

ATO

Industrial Ethernet Switch

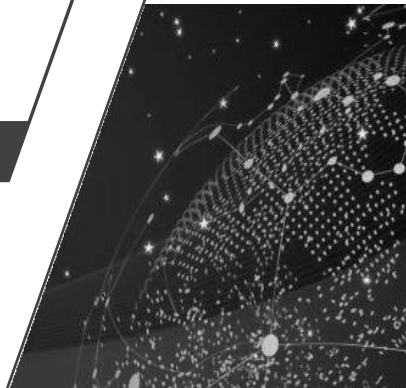
User manual

3 Interface description

MISCOM6216

MISCOM6218-2F

MISCOM6220-4F



V2.2

1 Packing list

The package of this switch contains the following items. If any item is found to be missing or damaged, please contact the agent or the customerservice center of ATO for assistant.

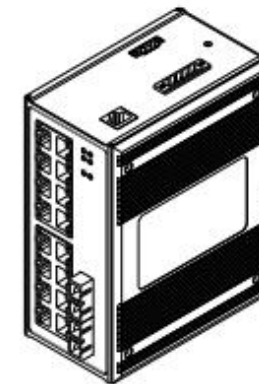
| Items | Quantity | Remarks |
|----------------------------|----------|------------------|
| Industrial Ethernet Switch | 1PC | |
| Power cord | 1PC | AD220 model only |
| User Manual | 1PC | |

2 Product description

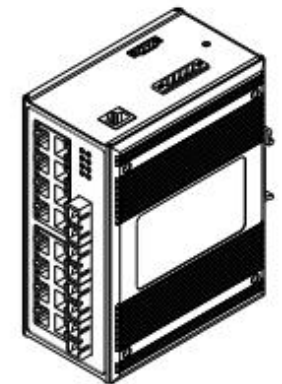
These series switches are managed din-rail industrial Ethernet switch. MISCOM6216 offers 16 ports (16x100M copper ports); MISCOM6218-2F offers 18 ports (16x100M copper port and 2x100M fiber port); MISCOM6220-4F offers 20 ports (16x100M copper and 4x100M fiber port).



MISCOM6216



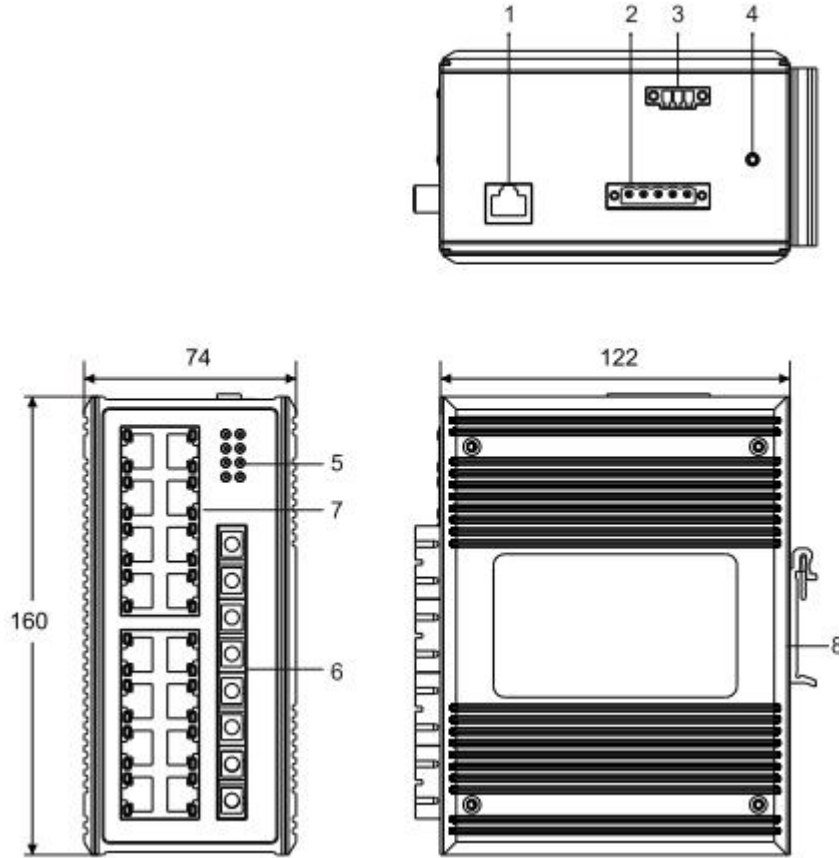
MISCOM6218-2F



MISCOM6220-4F

Take MISCOM6220-4Fas an example.

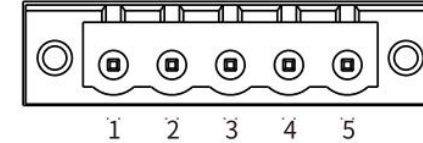
Unit:mm



| | |
|-------------------------|-------------------------|
| 1.CONSOLE port | 5.LED indication lights |
| 2.Power input terminal | 6. 100Base-FX port |
| 3.Relay output terminal | 7.10/100Base-TX port |
| 4.Ground screw | 8. DIN-Rail kit |

[Connect to the power]

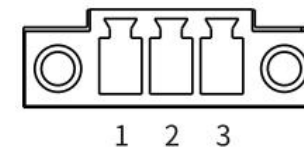
The DC power supply model of this switch supports dual power input, and the two power supplies are mutually backup; the AC power supply model supports dual power supplies. Using 5-position locking terminals with 5.08mm spacing, the wiring definitions are as follows:



| Number | Pin definition |
|--------|---------------------------------------|
| 1 | Power 1 Input V1+(AC-L)/Positive(DC) |
| 2 | Power 1 Input V1-(AC-N)/Negative (DC) |
| 3 | Grounded |
| 4 | Power 2 supply V2+ positive (DC) |
| 5 | Power 2 supply V2+ positive (DC) |

[Connect to the relay]

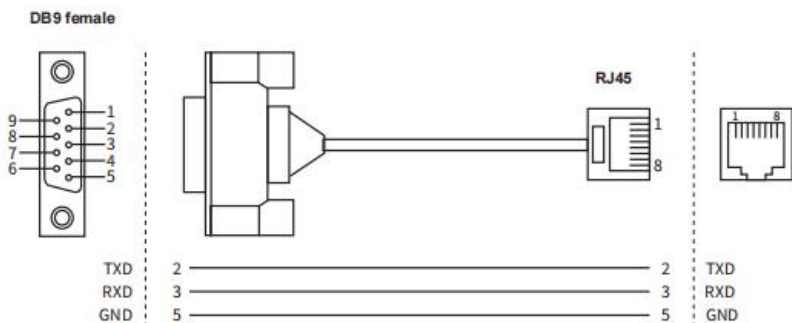
The wiring terminal adopts 3-position 3.81mm pitch terminal with one normally open and one normally closed relay. The one in the middle is the common terminal, and the two terminals on the left are the normally open relay, the two on the right are normally closed relays. When the switch is working, the left two on and the right two off. When the system is powered off, the left two off and the right two on. The recommended load capacity of the relay is 1A (24VDC).



| Number | Pin definition |
|--------|------------------------------------|
| 1 | Alarm relay output normally open |
| 2 | Alarm relay output common terminal |
| 3 | Alarm relay output normally closed |

[Connect to the CONSOLE]

The network management port is an RJ45 interface. Please use the serial port extension cable provided by our company to connect to the PC's serial port. The interface communication standard is 3-wire RS-232.



[LED indication lights]

The switch indicator lights description is shown in the table below:

| Indicator lights | Status | definition |
|--------------------------|--------|--|
| System Status LED | | |
| P1 | On | The power 1 is connected and operating normally |
| | Off | The power 1 is not connected or the system is not operating normally |
| P2 | On | The power 2 is connected and operating normally (AC power No P2) |

| | | |
|------------------------------|----------|--|
| | Off | The power 2 is not connected or the system is not operating normally(AC power No P2) |
| ALM | On | Relay alarm |
| | Off | No Relay alarm |
| RUN | Flashing | The system is operating normally |
| | On/off | The system is not working properly |
| Fiber Port Status LED | | |
| 17-20 | On | The port has established a valid network connection |
| | Flashing | There is network activity on the port |
| | Off | No valid network connection is established on the port |
| RJ45 Port Status LED | | |
| Link/Act | On | The port has established a valid network connection |
| | Flashing | There is network activity on the port |
| | Off | No valid network connection is established on the port |
| SPEED (1-16) | On | 100M working state (namely 100Base-TX) |
| | Off | 10M working status (namely 10Base-T) |

4 Hardware Installation

⚠ Installation Precautions

To prevent equipment damage or personal injury caused by improper use, observe the following precautions:

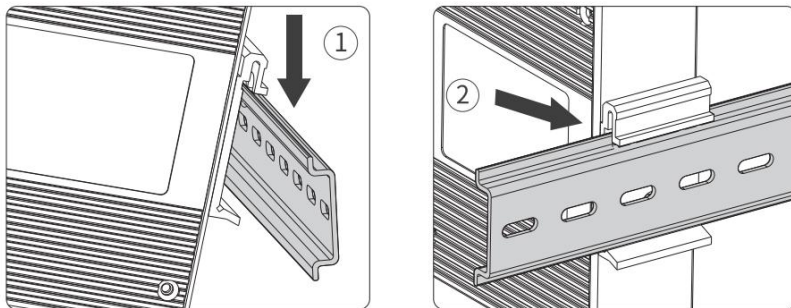
- During the installation process, you need to wear anti-static gloves or anti-static shoes, and power-off the switch.
- Please make sure that the input voltage is within the input voltage range

marked on the switch.

- The transmission distance has a certain relationship with the connected wire. It is recommended to use a standard Cat5e/6 network cable.
- The equipment must be grounded for lightning protection, otherwise the protection level of the equipment will be greatly reduced; please use a wire of No. 20 or more to connect the grounding terminal to the ground.
- The power line, ground line and signal line are laid out separately and the distance is not less than 5cm.

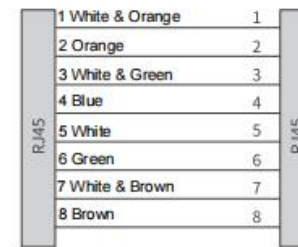
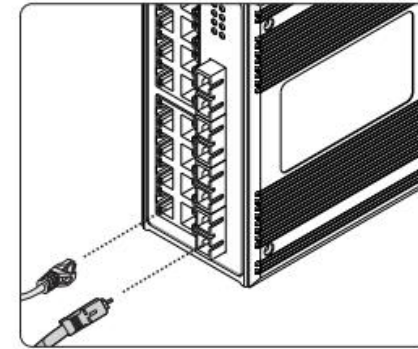
[Device installation]

- Tilt the switch upwards so that the upper end of the buckle is fastened to the upper end of the DIN rail.
- The lower end of the back buckle is buckled into the DIN rail.

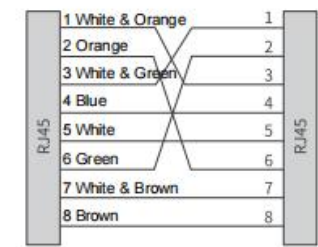


[Device connection]

Connect the network cable to the port in the correct direction.



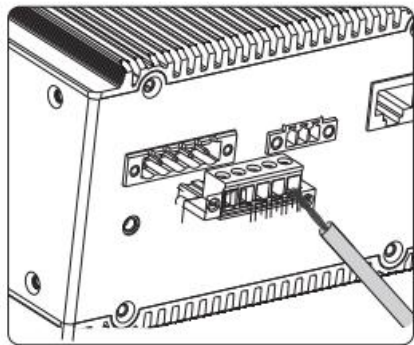
Category 5 direction connect cable



Category 5 crossover connection

[Power input]

Before connecting the power cord, make sure that the ground is connected. Do not connect the power cord to the power terminal of the device according to the definition.



1. When using a switch, the voltage can only be input from V1+ and V1-, V1+ connects to live wire L, and V1- to neutral wire N. Do not connect from V2+, V2-; pay attention to safety and prevent electric shock.
2. Power-on operation: First connect the power cord to the power terminal of the device according to the definition shown in the figure above, and then power on.
3. Power-off operation: first unplug the power plug, and then remove the power cord.

5 Specifications

| | | | |
|--------------------------|------------|---------------|---------------|
| | MISCOM6216 | MISCOM6218-2F | MISCOM6220-4F |
| Switch properties | | | |

| | | | |
|----------------------------|---|-----------------------------|------------------------------|
| Bandwidth | 12.8G | | |
| Cache size | 4.1Mbit | | |
| MAC table | 8K | | |
| Interface | | | |
| 100M fiber port | - | 2*100Base-FX | 4*100Base-FX |
| | SC/FC/ST connectors are available | | |
| 100M copper port | 16*10 /100Base-TX RJ45 ports | 1*10 /100Base-TX RJ45 ports | 16*10 /100Base-TX RJ45 ports |
| | Full-duplex/half-duplex adaptive, supports MDI/MDI-X adaptive | | |
| Power supply | | | |
| Consumption | 8W@24V(MAX) | 10W@24V(MAX) | 12W@24V(MAX) |
| DC power input | DC9~60V | | |
| | Supports dual power input and reverse connection protection | | |
| AC power input | AC85~264V (frequency: 47~63Hz) or DC110~370V | | |
| Mechanical | | | |
| Size | 160mm×74mm×122mm (L×W×H) (not include din-rail) | | |
| Installation | 35mm standard din-rail | | |
| Heat | Aluminum alloy single-rib chassis surface scattered | | |
| IP protection | IP40 | | |
| Working environment | | | |
| Working Temp. | -40°C~+75°C | | |
| Storage Temp. | -40°C~+85°C | | |
| Industry standard | | | |

| | |
|-----|--|
| EMC | IEC61000-4-2(ESD),Level4 IEC61000-4-5(Surge),Level4 Ethernet ports support 6KV lightning IEC61000-4-4(EFT),Level4 |
|-----|--|

6 Ordering guide

| Model | 100Base-FX | 10/100Base-TX | Power input |
|---------------|------------|---------------|---------------------------------------|
| MISCOM6216 | 0 | 16 | DC power supply: DC9~60V |
| MISCOM6218-2F | 2 | 16 | AC power supply: AC85-264V |
| MISCOM6220-4F | 4 | 16 | (frequency: 47~63Hz) or DC110-370V |

7 Pledge

Thank you for purchasing ATO products. You will enjoy the following services when using ATO products.

We solemnly promises: under normal use, one month's return, one-year free maintenance, five-year warranty, and lifetime maintenance. The specific details are as follows:

- If ATO products have quality problems and cannot work normally, they will be refunded for one month, free maintenance for one year, warranty for five years, and maintenance for life.
- If the number of repaired products is less than 10, the repair service will be completed within 7 days (excluding transportation time), and the repair service will be completed within one month for more than 10 sets.
- Optical passive products such as optical fibers, optical cables, jumpers, flanges, and optical cable terminal boxes are guaranteed within two years, but no return service is provided.
- The accessories and power supply that come with the product are

guaranteed for one year.

- When sending the product back to ATO for repair, it is recommended that the customer use the original packaging or the packaging with the same protective effect, otherwise the customer shall bear the risks that occur during the transportation.
- The repaired product can enjoy another 6 months warranty service.
- The product after-sales service is detailed in the purchase and sale contract, and ATO has the final interpretation right of this description.