

# ATO

## T3 series

# Industrial Vacuum Cleaner Operating Manual



Please read the contents in the manual carefully before use. (The pictures are for reference only.)

Special reminder: The equipment needs regular maintenance and cleaning, and the filters (consumables) need to be replaced regularly

This manual provides all the information on the use and maintenance of vacuum cleaners. Only with correct use and maintenance can the machine work more durably and effectively.

To ensure the correct use of the vacuum cleaner, it is essential to avoid its exposure to natural elements such as rain, hail, snow, fog, and suspended dust. It should be stored in a place where the temperature ranges from 5°C to 45°C and the relative humidity does not exceed 70%.

The working environment must be clean and free of explosive gases.

Some details shown in the illustrations in this manual may differ from your vacuum cleaner. Some components may have been omitted for the sake of clearer expression.

To make it easier to refer to this volume, this manual is divided into many parts, identified by specific graphic symbols.

After opening the machine packaging, please do not dispose of the packaging materials as household waste. Please send the packaging materials to the relevant recycling station for recycling and reuse.

All pictures are for reference only. The actual product may vary.

If you have any questions, please call the after-sales service department immediately.

## Introduction to Main Components



Number	Name	Number	Name
1	Start-stop switch	6	Power indicator light
2	Counter-blow pressing plate	7	power cord
3	Vacuum cleaner air intake port	8	buckle
4	Continuous bagging	9	Gas spring
5	6-inch single wheel	10	5-inch brake casters

## Technical parameters

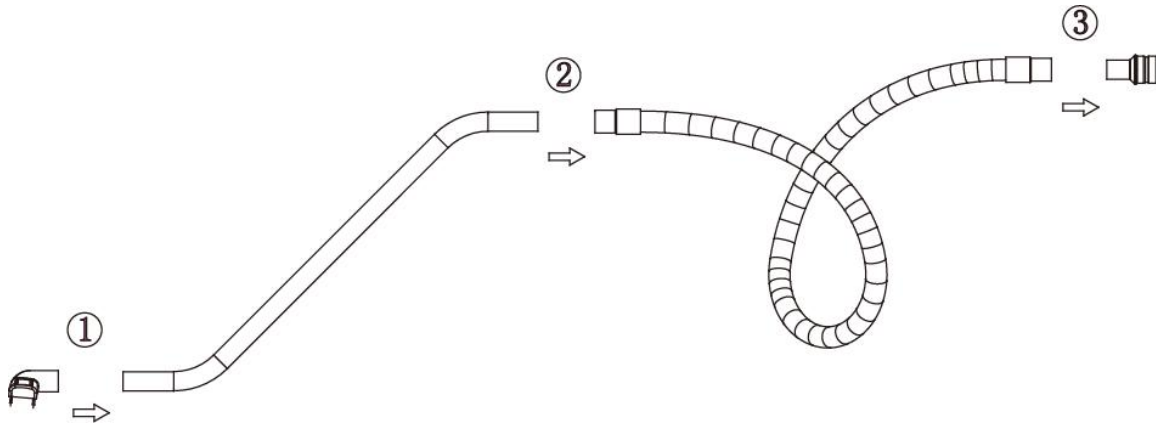
Model	T3 Series
Power (kW)	3*1.2
Power supply (V/Hz)	380/50
Vacuum pressure (mbar)	200
Maximum flow rate (m <sup>3</sup> /h)	620
Noise dB (A)	84±2
Filter area (m <sup>2</sup> )	1.5
Integrated drum volume approx. (L)	60
Dust removal method	Manual blowback cleaning
Approximate dimensions (mm)	610x670x1325
Approximate weight (kg)	57

## Accessory installation



### Attention!

The floor cleaning vacuuming set is an optional accessory. If needed, please contact ATO.



1. Connect the suction head to the elbow (or double joint pipe)
2. Connect the hose to the elbow (or double joint pipe)
3. Connect the hose to the reducer.
4. Connect the vacuuming component to the machine's suction port (if not for floor vacuuming, just connect the hose).



### Attention!

Do not roll up or twist the hose when vacuuming.

## Introduction of local push-button start/stop for devices



There are three switches, each independently controlling one of the three motors.

Press the switch to "I", and the vacuum cleaner starts working.

Press the switch to "O", and the vacuum cleaner stops working.

Note: After the equipment starts to be used, observe the dust suction and filter blockage conditions for 7 consecutive days to formulate a maintenance plan.



## Cwgpvkqp#'

Before connecting the power supply, please first confirm that the voltage of the power supply is consistent with that indicated on the equipment label.

- Confirm whether the plug and socket are suitable.
- Confirm whether the hose and the dust suction port are suitable.
- Confirm the quality of the wires and other extension wires.
- Insert the selected accessory tightly into the end of the vacuum hose.



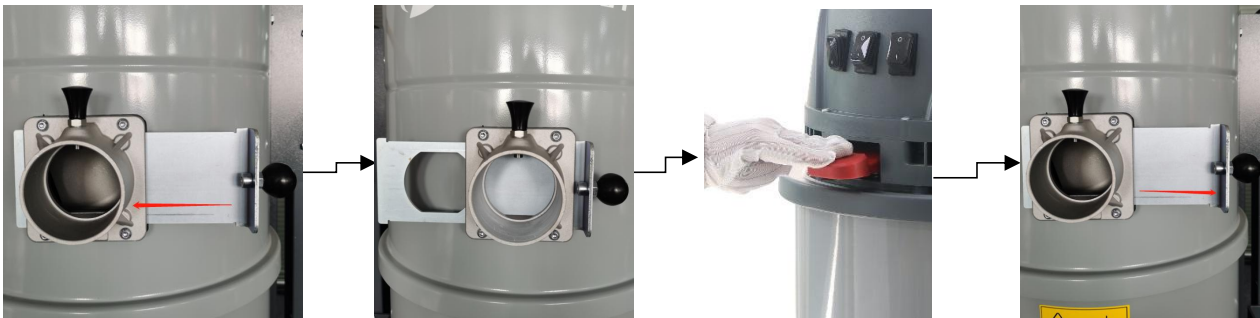
## Attention!

When the motor of the machine has completely stopped, restarting it will prolong its lifespan.

- When the vacuum cleaner is not in use, unplug it from the power source.

## Use manual back-blowing to remove dust.

1. Every day/shift (after closing the hopper), perform reverse air blow to clean the dust on the surface of the filter and restore the unobstructed condition of the filter.

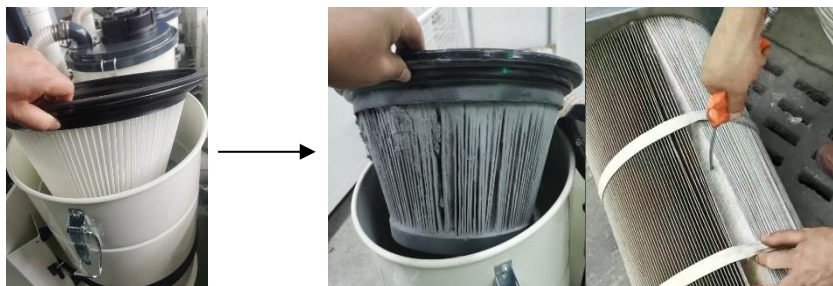


① When the equipment is turned on, move the plate and close the dust suction port.

② Press the blowback lever on the head (1s once) (inward airflow is generated to clean the dust).

③ Reopen the dust suction port after at least 1min of pressing to clear the dust.

2. Every day, the filter is back-blown to remove surface dust. However, for dust that has settled deep within the filter, manual cleaning is required.



Suggested manual cleaning frequency:  
1 in 3 days

① Open the lid and remove the filter    ② Blow the surface of the filter (inside/outside) with a compressed air gun.

**Special reminder:** The recommended maximum time for filter replacement is not more than 12 months, of which the reference time for heavy dust industry is 3~6 months. Some working conditions may be shorter. (Please change the filter regularly)

## Fault resolution

Malfunctions	Possible reasons	Solution
The machine won't start	There is no power supply	Check the power supply Check plug and cord integrity
Spillage of inhaled dirt	Vacuum hose with small holes	Get a new hose
	Dust filter	Getting a new filter
Vacuum cleaner not working properly	Vacuum hose has a hole in it or it's clogged	Check the vacuum hose and replace it with a new one if it is no longer usable
	Motor thermal overload protection tripped	Open the cover plate of the electrical box and press the reset button to restore
	Clogged filters	Clean the filter screen. If it can no longer be used, replace it with a new one
	Motor heating	Please check for clogged filters
The engine is very noisy	Contact ATO After Sales Service	



### Attention!

For other faults, please contact the ATO Service Department.