

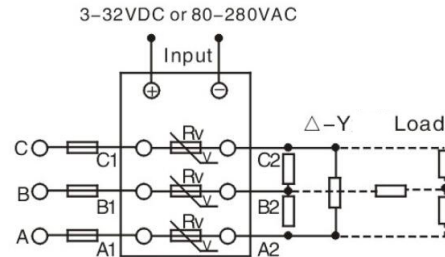
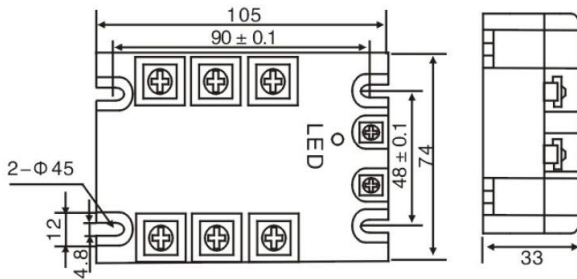




### Features

- ◆ DC or AC control
- ◆ Load current 10-120A
- ◆ Built-in RC
- ◆ LED indicator
- ◆ Zero-cross

### SSR Dimension & Installation



### Solid State Relay Specification

MODEL	SYTH □ 48ZD3	SYTH □ 48ZA2
<b>INPUT</b>		
Control voltage range	3-32V DC(D3)	70-280V AC(A2)
Max input current	40mA	15mA
Must operation voltage	4V DC	70V AC
Must release voltage	2.7V DC	50V AC
<b>OUTPUT</b>		
Load voltage range	24-480V AC	
Peak voltage	1000V	
Load current	10A, 15A, 20A, 25A, 40A, 50A, 60A, 75A, 80A, 100A, 120A	
Max. off-state leakage current	≤8mA	
Max. on-state voltage drop	1.5V	
<b>GENERAL</b>		
Size (mm)	105L × 74W × 33H	
Weight (approx.)	500g	
Dielectric strength (input to output)	4000V AC	
Dielectric strength (input, output to base)	2500V AC	
Operating temperature	-20°C~80°C	
Certification	CE	

#### Notes:

1. If the load can bring high surge current (such as bulb, etc.), make sure that SSR can bear the surge current.
2. The SSR surge current in the above specification is non-repetitive surge current peak. Generally, half of the non-repetitive current peak is regarded as a standard value. Thus, if a surge current through the SSR exceed this standard value, a fast fuse should be connected to output terminal, so as to avoid the damage of SSR.
3. If an instantaneous voltage added to the output terminal of SSR exceeds the range in the spec, a varistor should be connected to output terminal in parallel. 750V varistor is recommended.